



DISCLAIMER: Second-Hand Plant Condition and Safety

This document is Jungheinrich Australia Pty Ltd's (**Jungheinrich**) official notice that the second-hand plant offered for sale through this transaction (direct sale or auction) may contain faults or deficiencies that could pose risks to health and safety.

Important Information

Safety & Compliance of the Plant

Given the plant is second-hand, please be aware it may include wear and tear, or be missing safety features that were not present or required at the time of original manufacture.

Jungheinrich has taken all reasonably practicable steps to identify any faults in the plant. The **enclosed Condition Report** sets out the current condition of this plant, including any identified faults.

While all efforts have been made to identify faults, there may be other faults present that did not show up at time of inspection

Operational Safety Notice

The plant should not be used until all identified faults have been rectified and the equipment is deemed safe for operation.

It is the responsibility of the purchaser to ensure that the plant is inspected, serviced, and, if necessary, modified to meet current safety standards before use.

By participating in this sale and purchasing the second-hand plant, the purchaser acknowledges receipt of this notice and accepts full responsibility for ensuring the plant is safe for use.

Operating condition of the plant

Note: this condition report is a safety report only and does not represent overall appearance or operating condition of the plant

For any questions please contact Jungheinrich



Used Sale Safety & Compliance Check

MHE-000250 / 125305 / Harley Mendoza / 20/03/2026 / Jungheinrich / EZS 130

Complete

Flagged items	0
Report ID	MHE-000250
Technician Name	Harley Mendoza
Conducted on	20/03/2026 10:20 AM AEDT
Branch	Sydney

Unit Details

Equipment No. 125305

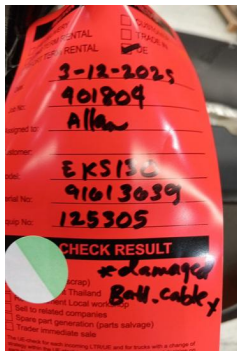


Photo 1

Brand Jungheinrich



Photo 2

Model EZS 130

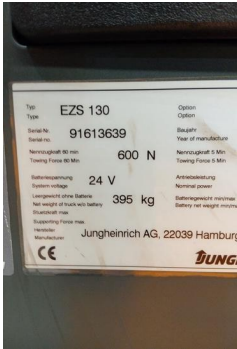


Photo 3

Include Images of the Front, Rear & Sides of the Unit



Photo 4



Photo 5



Photo 6



Photo 7

Observations Summary

Truck Category	Category 2 - Ride on Junior Trucks
Emergency Stop accessible and operational	Yes
Foot switch allows drive function only when depressed	Yes
Operator gates (optional on low level order pickers) restrict travel when open	N/A
Horn/Warning device operational	Yes
Confirm safety systems not bypassed or malfunctioning?	Yes

Additional Observations & Actions

List any other notable defects or faults e.g. ROPS/FOPS damage etc.

Battery cable damaged

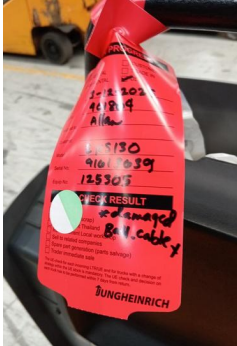


Photo 8

Technician Sign off



Harley Yamaha Mendoza
20/03/2026 10:24 AM AEDT

Media summary

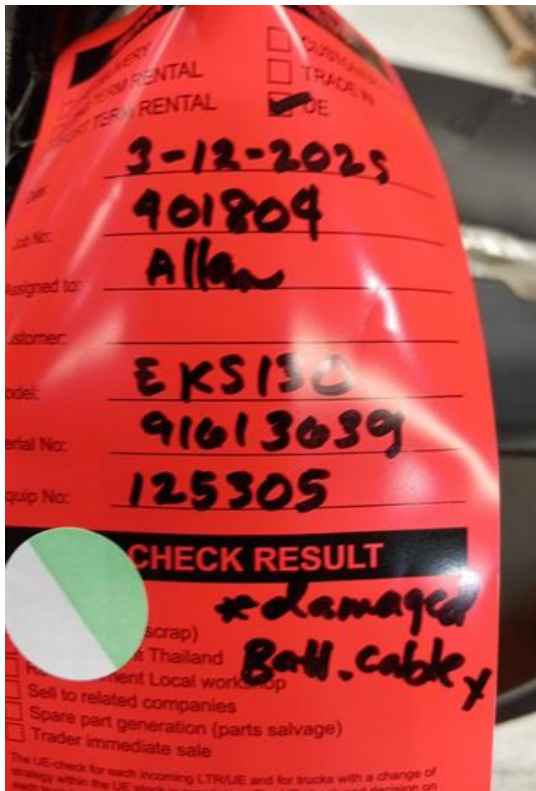


Photo 1



Photo 2



Photo 3



Photo 4



Photo 5



Photo 6



Photo 7

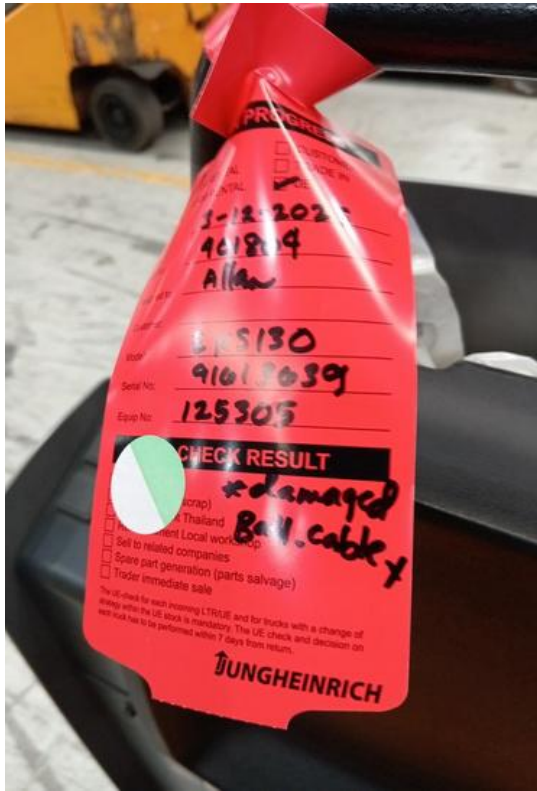


Photo 8