

Performance-Based Standards (PBS) Vehicle Approval

Heavy Vehicle National Law Section 23

Heavy Vehicle (General) National Regulation Section 17

This is not an authorisation to access the road network.
You must comply with the relevant Notice or if required, obtain an access permit.

7 November 2021

Ref No: PBS – V210622 – VA10137 – 1

This PBS Vehicle Approval modifies any previously issued approval for the vehicle(s) listed herein operating under Application Number V210622.

Applicant details	Operator
-------------------	----------

Application Number	V210622	Vehicle	5-axle truck 3-axle dog
Load	Quarry and Bulk; Bin	Length (mm)	≤ 19950
Assessor	Daniel Nolan	Height (mm)	≤ 4300

Combination matrix

For each truck and trailer, the corresponding drawing and dimension set number is listed. The dimension set number (e.g. Variant 2) indicates the maximum allowable payload heights and/or allowable tyre options for the specific combination (refer to payload height operating conditions and approved tyre options). Additional vehicle units are listed in bold.

Truck 1
6F5000000MA471607

Trailer 1
6V9T24STEMC075059

Truck 1	Trailer 1
	DWG: ATC1951-L-01 Variant 2 Table 1, 2

Table 1
Truck 1 and Trailer 1

Mass Limits	Level 1		Axle Group Masses	Level 1
				GML
GML (t)	50.0		Steer (t)	11.0
CML (t)	NA		Drive (t)	20.0
HML (t)	NA		Trailer Front (t)	7.2
Bridge Assessment	Tier 1		Trailer Rear (t)	13.8
			The mass across axle groups is limited to -	
			Axle Groups	GML
			3 to 4	19.55

Table 2
Truck 1 and Trailer 1

Mass Limits	Level 2	Axle Group Masses	Level 2		
			GML	CML	HML
GML (t)	56.5	Steer (t)	11.0	11.0	11.0
CML (t)	58.0	Drive (t)	20.0	21.0	22.5
HML (t)	59.5	Trailer Front (t)	9.0	9.0	9.0
Bridge Assessment	Tier 1	Trailer Rear (t)	16.5	17.0	17.0

Operating conditions

The NHVR approves the vehicles listed herein for the level(s) shown in the “Mass Limits” table with the following operating conditions:

1. The total combination mass must not exceed the limits in the “Mass Limits” table.
2. The axle group masses must not exceed the limits in the “Axle Group Masses” table.
3. If the “Mass Limits” table specifies Tier 2 or Tier 3, a bridge assessment is required.
4. Maximum payload heights measured from the ground must not exceed: (m)

Variant 2 Level 1		
	Heaped payload	Water level payload
Truck	3.370	3.170
Trailer	3.370	3.170

Variant 2 Level 2		
	Heaped payload	Water level payload
Truck	3.360	3.160
Trailer	3.290	3.090

Heaped payloads are taken to be the same volume of material as *water level payloads*.

5. For twin-steer axle group operation above 10.0t:
 - Load sharing suspension.
6. Concessional Mass Limits (CML) requirements:
 - a National Heavy Vehicle Accreditation Scheme (NHVAS) – Mass Management Accreditation must be in force for all motor vehicles listed on this vehicle approval.
7. Higher Mass Limits (HML) requirements:
 - for tandem axles groups, road friendly suspensions;
 - for tri-axle groups, road friendly suspensions and a National Heavy Vehicle Accreditation Scheme (NHVAS) – Mass Management Accreditation must be in force for all motor vehicles listed on this vehicle approval.
8. When operating at Level 1, there is a minimum mass requirement for the drive axle group. The mass on the drive axle group must be at least 39% of the total combination mass e.g. at 50t total combination mass, $50 \times 0.39 = 19.5\text{t}$ is required on the drive axle group. This clause does not apply to an unladen vehicle.
9. When operating at Level 2, there is a minimum mass requirement for the drive axle group. The mass on the drive axle group must be at least 29.55% of the total combination mass e.g. at 56.5t total combination mass, $56.5 \times 0.2955 = 16.7\text{t}$ is required on the drive axle group. This clause does not apply to an unladen vehicle.
10. When the truck includes retractable axles, these axles must only be retracted when the vehicle is operating unladen.

Exemptions

Heavy Vehicle National Law Section 24

Heavy Vehicle (General) National Regulation Section 28

The following table lists exemptions from prescribed vehicle standards that have been granted for the vehicle(s) in this vehicle approval.

Exemptions	
ADR	NA
HV(MDL)NR	Schedule 6, Section 3 (Length – General)
HV(VS)NR	NA

ADR Australian Design Rules

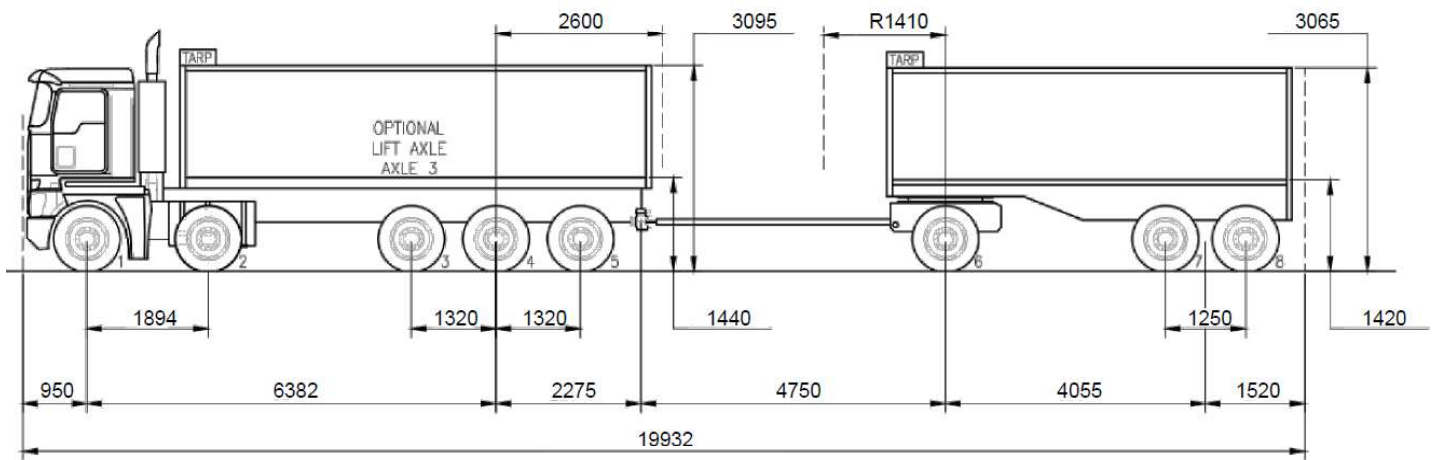
HV(MDL)NR *Heavy Vehicle (Mass, Dimension and Loading) National Regulation*

HV(VS)NR *Heavy Vehicle (Vehicle Standards) National Regulation*

ASBUILT DWG:
ATC1951-L-01

Truck 1
Trailer 1

VARIANT 2





Details of truck(s) or prime mover(s) – Truck 1

Make	Kenworth
Model	K200 10x4
VIN(s)	6F5000000MA471607
Engine make/ model/ rating	Cummins X15 Euro 5 – 600HP
Transmission make/ model	Eaton RTLO22918B
Differential make/ model/ FD ratio	Dana D46-170 – 4.30
Suspension make/ model (Steer)	Kenworth Load-Share Twin Steer - 12t
Suspension make/ model (Drive)	Axle 3: Hendrickson Toughlift FM Axle 4&5: Kenworth Airglide 460
Tyres make/ size/ model (Steer)	295/80R22.5 Michelin X Multi
Tyres make/ size/ model (Drive)	11R22.5 Michelin XDY3
Brakes (Load Proportioning, ABS, ECB, etc.)	EBS
Tow coupling make/ D rating	Ringfeder 50mm Automatic Pin Coupling 320KN
Wheelbase (mm)	6382
Vehicle height (Measured from the ground) (mm)	4125
Number of axles	5
ADR category	NC
GVM (kg)	34,000
GCM (kg)	97,000
Comments/ notes:	



Details of trailer(s) or dolly(s) – Trailer 1

Type	3-Axle Dog Trailer
Make	Shephard
Model	A3Dog-235T
VIN(s)	6V9T24STEMC075059
Suspension make/ model	Front: Hendrickson AAL230 (12" nominal ride height) Rear: Hendrickson AAT230 (15" nominal ride height)
Tyres make/ size/ model	11R22.5 Bridgestone R168
Drawbar length (mm)	4750
Coupling make/ D rating	Ballrace
Brakes (Load Proportioning, ABS, ECB, etc.)	EBS
Wheelbase (mm)	4055
Vehicle height (Measured from the ground) (mm)	3420
Number of axles	3
ADR category	TD
ATM (kg)	26,000
Comments/ notes:	

Approved tyre options – Option 1

Steer –

- non-brand specific 22.5-inch rim diameter

Drive –

- non-brand specific 22.5-inch rim diameter

Trailer –

- **11R22.5** Advance GL671A, BF Goodrich Route Control S, Boto BT370, Bridgestone, Continental HT3, HTR, Double Star HR169, HR268, Dunlop, Firestone FT469, T559, Goodyear, Hankook TH22, TH31, Haulmax ATT101, ATT202, Michelin, O'Green AG168, Remington R628, Sportrak SP901, TechKing TKAM II, Triangle TR668, Yokohama RY588
- **275/70R22.5** Austyre ST04, BF Goodrich Route Control S, Bridgestone, Firestone T559, Goodyear LHT II, Hankook TH22, TH31, Kumho KRT01, Michelin, O'Green AG516

Retread tyres are permitted on the steer and drive axles.

Retread tyres are permitted on the trailer axles provided they are certified by the manufacturer that its performance is equivalent to a new tyre.

Tyre load ratings must be appropriate for the axle mass.

Tyres listed herein are specific for PBS application number V210622.

A different list of tyres will apply for other combination types and different PBS application numbers.

Approved tyre options – Option 2

Steer –

- non-brand specific 22.5-inch rim diameter

Drive –

- **11R22.5** Advance GL671A, Bridgestone, Chao Yang CM333, Double Star HR169, HR268, Dunlop, Firestone FD663, Goodride MD738, Goodyear, Haulmax ATT101, ATT202, Michelin, O'Green AG677, Remington R666, II, Sportrak SP901, TechKing TKAM II, Triangle TR668, TR688
- **295/80R22.5** Bridgestone, Dunlop, Goodyear, Hankook AH33, AL10, DL10, Maxxis UR200, Michelin

Trailer –

- non-brand specific 22.5-inch rim diameter

Retread tyres are permitted on the steer and trailer axles.

Retread tyres are permitted on the drive axles provided they are certified by the manufacturer that its performance is equivalent to a new tyre.

Tyre load ratings must be appropriate for the axle mass.

Tyres listed herein are specific for PBS application number V210622.

A different list of tyres will apply for other combination types and different PBS application numbers.

Approved tyre options – Option 3

Steer –

- non-brand specific 22.5-inch rim diameter

Drive and Trailer –

		TRAILING UNIT TYRES																		
DRIVE TYRES		Advance GL274A 11R22.5	Aeolus AGC28 275/70R22.5	Aeolus ASR30 275/70R22.5	Aeolus HN06 11R22.5	Aeolus HN08 11R22.5	Aeolus HN266 11R22.5	Austone AT127 11R22.5	Austone AT27s 11R22.5	Austone AT35 11R22.5	Austyre ST01 11R22.5	Boto BT168 11R22.5	Chao Yang CR906 275/70R22.5	Chao Yang CR926D 11R22.5	Chao Yang CR960A 11R22.5	Chao Yang CR976A 275/70R22.5	Continental HSC1 11R22.5	Dunlop 275/70R22.5	GT Radial GT276 11R22.5	GT Radial GT276 275/70R22.5
	Advance GL274A 11R22.5				•		•					•		•	•			•		
	Aeolus ADC53 11R22.5				•		•					•			•			•		
	Aeolus HN08 11R22.5				•		•					•	•	•	•	•	•	•	•	
	Aeolus HN266 11R22.5	•	•	•	•	•	•	•	•	•	•	•	•	•	•	•	•	•	•	•
	Austone AT127 11R22.5																	•		
	Austone AT27s 11R22.5				•		•					•			•	•		•		
	Austone AT35 11R22.5										•									
	Austyre Raptor 11R22.5				•		•					•			•	•		•		
	Boto BT168 11R22.5	•	•	•	•	•	•	•	•	•	•	•	•	•	•	•	•	•	•	•
	Continental HD HYBRID 295/80R22.5	•	•	•	•	•	•	•	•	•	•	•	•	•	•	•	•	•	•	•
	Continental HDC1 295/80R22.5				•		•					•		•	•	•		•		
	Continental HDR2+ 11R22.5				•	•	•					•			•	•		•		
	Continental HSC1 11R22.5				•	•	•					•		•	•	•		•		
	Double Coin RLB1 11R22.5		•		•	•	•	•				•	•	•	•	•	•	•	•	
	Firestone FD664 11R22.5		•		•	•	•	•				•	•	•	•	•	•	•	•	
	GT Radial GSR225 295/80R22.5							•								•			•	
	GT Radial GT276 11R22.5		•			•		•		•			•	•	•	•	•	•	•	•
	General Tire RA 11R22.5		•			•	•	•		•			•	•	•	•	•	•	•	•
	GiTi GAR827 11R22.5		•			•		•		•			•	•	•	•	•	•	•	
GiTi GSR225 295/80R22.5						•								•			•			

A cell that is denoted by a ‘•’ indicates a permissible combination of drive and trailing unit tyres. Cells that are blank are not permitted.

Retread tyres are permitted on the steer axle.

Retread tyres are permitted on the drive and trailer axles, provided they are certified by the manufacturer that its performance is equivalent to a new tyre.

Tyre load ratings must be appropriate for the axle mass.

Tyres listed herein are specific for PBS application number V210622.

A different list of tyres will apply for other combination types and different PBS application numbers.

Approved tyre options – Option 3

Steer –

- non-brand specific 22.5-inch rim diameter

Drive and Trailer –

	TRAILING UNIT TYRES															
	GT Radial GT279 275/70R22.5	General Tire RA 11R22.5	GiTi GAR827 11R22.5	GiTi GAR827 275/70R22.5	GiTi GT276 11R22.5	GiTi GT276 275/70R22.5	GiTi GT279 275/70R22.5	Golden Crown AT160 11R22.5	Golden Crown AZ126 11R22.5	Goodride AS678 11R22.5	Goodride CB972 11R22.5	Goodride CR926D 11R22.5	Goodride CR960A 11R22.5	Goodride CR976A 275/70R22.5	Goodyear 275/70R22.5	Hankook AH22 11R22.5
DRIVE TYRES																
	Advance GL274A 11R22.5	•								•		•	•		•	
	Aeolus ADC53 11R22.5		•							•		•	•		•	
	Aeolus HN08 11R22.5		•	•		•				•		•	•		•	
	Aeolus HN266 11R22.5	•	•	•	•	•	•	•	•	•	•	•	•	•	•	•
	Austone AT127 11R22.5									•					•	
	Austone AT27s 11R22.5		•							•		•	•		•	
	Austone AT35 11R22.5									•						
	Austyre Raptor 11R22.5		•							•		•	•		•	
	Boto BT168 11R22.5	•	•	•	•	•	•	•	•	•	•	•	•	•	•	•
	Continental HD HYBRID 295/80R22.5	•	•	•	•	•	•	•	•	•	•	•	•	•	•	•
	Continental HDC1 295/80R22.5		•							•		•	•		•	
	Continental HDR2+ 11R22.5		•							•		•	•		•	
	Continental HSC1 11R22.5		•							•		•	•		•	
	Double Coin RLB1 11R22.5		•	•		•				•		•	•	•	•	
	Firestone FD664 11R22.5		•	•		•				•		•	•	•	•	
	GT Radial GSR225 295/80R22.5		•							•		•	•		•	
	GT Radial GT276 11R22.5		•	•		•				•		•	•	•	•	
	General Tire RA 11R22.5	•	•	•	•	•	•			•	•	•	•	•	•	•
	GiTi GAR827 11R22.5		•	•		•				•		•	•	•	•	
	GiTi GSR225 295/80R22.5		•							•		•	•		•	

A cell that is denoted by a '•' indicates a permissible combination of drive and trailing unit tyres. Cells that are blank are not permitted.

Retread tyres are permitted on the steer axle.

Retread tyres are permitted on the drive and trailer axles, provided they are certified by the manufacturer that its performance is equivalent to a new tyre.

Tyre load ratings must be appropriate for the axle mass.

Tyres listed herein are specific for PBS application number V210622.

A different list of tyres will apply for other combination types and different PBS application numbers.

Approved tyre options – Option 3

Steer –

- non-brand specific 22.5-inch rim diameter

Drive and Trailer –

DRIVE TYRES	TRAILING UNIT TYRES														
	Haulmax ATT101 275/70R22.5	Haulmax ATT103 11R22.5	Haulmax ATT308 11R22.5	Hifly HAR515 275/70R22.5	Hifly HH104 11R22.5	Hifly HH301 11R22.5	Hilo 100 11R22.5	Hilo 660 11R22.5	Jinyu JY601 11R22.5	Kumho KRT03 11R22.5	Maxxis MT212 11R22.5	Maxxis UR288 11R22.5	Maxxis UR288 275/70R22.5	NiPon AZ126 11R22.5	Remington R628 II 11R22.5
Advance GL274A 11R22.5	•			•	•	•	•						•	•	•
Aeolus ADC53 11R22.5	•			•	•	•	•						•		•
Aeolus HN08 11R22.5	•			•	•	•	•						•	•	•
Aeolus HN266 11R22.5	•	•	•	•	•	•	•	•	•	•	•	•	•	•	•
Austone AT127 11R22.5															•
Austone AT27s 11R22.5	•			•	•	•	•						•	•	•
Austone AT35 11R22.5															•
Austyre Raptor 11R22.5	•			•	•	•	•						•		•
Boto BT168 11R22.5	•	•		•	•	•	•	•	•	•	•	•	•	•	•
Continental HD HYBRID 295/80R22.5	•	•	•	•	•	•	•	•	•	•	•	•	•	•	•
Continental HDC1 295/80R22.5	•			•	•	•	•						•	•	•
Continental HDR2+ 11R22.5	•			•	•	•	•						•	•	•
Continental HSC1 11R22.5	•			•	•	•	•						•	•	•
Double Coin RLB1 11R22.5	•			•	•	•	•	•					•	•	•
Firestone FD664 11R22.5	•			•	•	•	•	•					•	•	•
GT Radial GSR225 295/80R22.5	•			•	•	•	•						•		•
GT Radial GT276 11R22.5	•			•	•	•	•	•					•	•	•
General Tire RA 11R22.5	•	•		•	•	•	•		•	•			•	•	•
GiTi GAR827 11R22.5	•			•	•	•	•		•				•	•	•
GiTi GSR225 295/80R22.5	•			•	•	•	•						•		•

A cell that is denoted by a ‘•’ indicates a permissible combination of drive and trailing unit tyres. Cells that are blank are not permitted.

Retread tyres are permitted on the steer axle.

Retread tyres are permitted on the drive and trailer axles, provided they are certified by the manufacturer that its performance is equivalent to a new tyre.

Tyre load ratings must be appropriate for the axle mass.

Tyres listed herein are specific for PBS application number V210622.

A different list of tyres will apply for other combination types and different PBS application numbers.



Approved tyre options – Option 3

Steer –

- non-brand specific 22.5-inch rim diameter

Drive and Trailer –

		TRAILING UNIT TYRES																	
		Sportrak BYS98 11R22.5	Sportrak SP398 11R22.5	Techking TKAM C+ 11R22.5	Techking TKST IV 275/70R22.5	Toyo M122 11R22.5	Triangle TR656 275/70R22.5	Triangle TR666 11R22.5	Triangle TRS01 11R22.5	Westlake CR926D 11R22.5	Westlake MD738 11R22.5	Windpower HN06 11R22.5	Windpower HN08 11R22.5	Windpower HN266 11R22.5	Windpower WDR23 11R22.5	Windpower WGB20 275/70R22.5	Windpower WGC08 11R22.5	Windpower WGC28 275/70R22.5	Windpower WSJ06 11R22.5
DRIVE TYRES	Advance GL274A 11R22.5	●	●	●	●	●			●		●	●		●	●			●	●
	Aeolus ADC53 11R22.5	●	●	●	●	●			●		●	●		●	●			●	●
	Aeolus HN08 11R22.5	●	●	●	●	●			●	●	●	●		●	●			●	●
	Aeolus HN266 11R22.5	●	●	●	●	●	●	●	●	●	●	●	●	●	●	●	●	●	●
	Austone AT127 11R22.5			●															
	Austone AT27s 11R22.5	●	●	●	●	●			●		●	●	●		●	●			●
	Austone AT35 11R22.5			●															
	Austyre Raptor 11R22.5	●	●	●	●	●			●			●	●		●	●			●
	Boto BT168 11R22.5	●	●	●	●	●	●	●	●	●	●	●	●	●	●	●	●	●	●
	Continental HD HYBRID 295/80R22.5	●	●	●	●	●	●	●	●	●	●	●	●	●	●	●	●	●	●
	Continental HDC1 295/80R22.5	●	●	●	●	●			●		●	●	●		●	●			●
	Continental HDR2+ 11R22.5	●	●	●	●	●			●		●	●	●		●	●			●
	Continental HSC1 11R22.5	●	●	●	●	●			●		●	●	●		●	●			●
	Double Coin RLB1 11R22.5	●	●	●	●	●	●	●		●	●	●	●		●	●	●		●
	Firestone FD664 11R22.5	●	●	●	●	●	●		●	●	●	●	●		●	●	●		●
	GT Radial GSR225 295/80R22.5	●	●	●	●	●			●		●	●			●	●			●
	GT Radial GT276 11R22.5	●	●	●	●	●	●	●	●	●	●	●	●		●	●	●		●
	General Tire RA 11R22.5	●	●	●	●	●	●	●	●	●	●	●	●	●	●	●	●	●	●
	GiTi GAR827 11R22.5	●	●	●	●	●	●	●	●	●	●	●	●		●	●	●		●
	GiTi GSR225 295/80R22.5	●	●	●	●	●			●		●				●	●			●

A cell that is denoted by a '•' indicates a permissible combination of drive and trailing unit tyres. Cells that are blank are not permitted.

Retread tyres are permitted on the steer axle.

Retread tyres are permitted on the drive and trailer axles, provided they are certified by the manufacturer that its performance is equivalent to a new tyre.

Tyre load ratings must be appropriate for the axle mass.

Tyres listed herein are specific for PBS application number V210622.

A different list of tyres will apply for other combination types and different PBS application numbers.

Approved tyre options – Option 3

Steer –

- non-brand specific 22.5-inch rim diameter

Drive and Trailer –

	TRAILING UNIT TYRES															
	Advance GL274A 11R22.5	Aeolus AGC28 275/70R22.5	Aeolus ASR30 275/70R22.5	Aeolus HN06 11R22.5	Aeolus HN08 11R22.5	Aeolus HN266 11R22.5	Austone AT127 11R22.5	Austone AT27s 11R22.5	Austone AT35 11R22.5	Austyre ST01 11R22.5	Boto BT168 11R22.5	Chao Yang CR906 275/70R22.5	Chao Yang CR926D 11R22.5	Chao Yang CR960A 11R22.5	Chao Yang CR976A 275/70R22.5	Continental HSC1 11R22.5
DRIVE TYRES	GiTi GT276 11R22.5	•		•		•		•			•	•	•	•	•	•
	Goodride CM958 295/80R22.5			•		•					•		•	•		•
	Hankook AH22 11R22.5		•		•	•		•			•	•	•	•	•	•
	Hankook AH22+ 295/80R22.5	•	•	•	•	•	•	•	•	•	•	•	•	•	•	•
	Hankook AH22R 295/80R22.5		•		•	•		•			•	•	•	•	•	•
	Hankook AM06 11R22.5				•	•					•		•	•		•
	Hankook AM06 295/80R22.5		•		•	•		•			•	•	•	•	•	•
	Hankook DH16 11R22.5													•		
	Hankook DM03 11R22.5														•	
	Hankook DM09 11R22.5		•		•	•		•			•	•	•	•	•	•
	Hankook Z35A 11R22.5														•	
	Haulmax ATT307 11R22.5		•		•	•	•	•	•		•	•	•	•	•	•
	Hifly HH104 11R22.5		•		•	•	•	•			•	•	•	•	•	•
	Hifly HH301 11R22.5		•		•	•	•	•	•		•	•	•	•	•	•
	Hifly HH308A 11R22.5	•	•	•	•	•	•	•	•	•	•	•	•	•	•	•
	Hifly HH312 11R22.5	•	•	•	•	•	•	•	•	•	•	•	•	•	•	•
	Hilo 660 11R22.5				•	•					•		•	•		•
	Jinyu JY601 11R22.5		•		•	•		•			•	•	•	•	•	•
	Loadrunner LR835D 11R22.5					•								•		
	Maxxis UR288 295/80R22.5														•	

A cell that is denoted by a '•' indicates a permissible combination of drive and trailing unit tyres. Cells that are blank are not permitted.

Retread tyres are permitted on the steer axle.

Retread tyres are permitted on the drive and trailer axles, provided they are certified by the manufacturer that its performance is equivalent to a new tyre.

Tyre load ratings must be appropriate for the axle mass.

Tyres listed herein are specific for PBS application number V210622.

A different list of tyres will apply for other combination types and different PBS application numbers.

Approved tyre options – Option 3

Steer –

- non-brand specific 22.5-inch rim diameter

Drive and Trailer –

		TRAILING UNIT TYRES																		
DRIVE TYRES		GT Radial GT279 275/70R22.5	General Tire RA 11R22.5	GiTi GAR827 11R22.5	GiTi GAR827 275/70R22.5	GiTi GT276 11R22.5	GiTi GT276 275/70R22.5	GiTi GT279 275/70R22.5	Golden Crown AT160 11R22.5	Golden Crown AZ126 11R22.5	Goodride AS678 11R22.5	Goodride CB972 11R22.5	Goodride CR926D 11R22.5	Goodride CR960A 11R22.5	Goodride CR976A 275/70R22.5	Goodyear 275/70R22.5	Hankook AH22 11R22.5	Hankook AM06 11R22.5	Hankook TH06 11R22.5	Hankook TM22 11R22.5
	GiTi GT276 11R22.5		●	●		●					●		●	●	●	●	●			
	Goodride CM958 295/80R22.5		●								●		●	●		●				
	Hankook AH22 11R22.5		●	●		●					●		●	●	●	●	●	●		
	Hankook AH22+ 295/80R22.5	●	●	●	●	●	●	●	●	●	●	●	●	●	●	●	●	●	●	●
	Hankook AH22R 295/80R22.5	●	●	●	●	●	●	●			●	●	●	●	●	●	●			●
	Hankook AM06 11R22.5		●								●			●	●	●				
	Hankook AM06 295/80R22.5		●	●		●					●			●	●	●	●	●		
	Hankook DH16 11R22.5										●			●	●		●			
	Hankook DM03 11R22.5										●			●			●			
	Hankook DM09 11R22.5	●	●	●	●	●	●	●			●	●	●	●	●	●	●	●		●
	Hankook Z35A 11R22.5										●			●			●			
	Haulmax ATT307 11R22.5	●	●	●	●	●	●	●		●	●	●	●	●	●	●	●	●	●	●
	Hifly HH104 11R22.5		●	●		●					●			●	●	●	●	●		
	Hifly HH301 11R22.5	●	●	●	●	●	●	●		●	●	●	●	●	●	●	●	●	●	●
	Hifly HH308A 11R22.5	●	●	●	●	●	●	●	●	●	●	●	●	●	●	●	●	●	●	●
	Hifly HH312 11R22.5	●	●	●	●	●	●	●		●	●	●	●	●	●	●	●	●	●	●
	Hilo 660 11R22.5		●								●			●	●		●	●		
	Jinyu JY601 11R22.5		●	●		●					●	●	●	●	●	●	●	●		●
	Loadrunner LR835D 11R22.5		●								●			●	●		●			
Maxxis UR288 295/80R22.5										●			●			●				

A cell that is denoted by a ‘•’ indicates a permissible combination of drive and trailing unit tyres. Cells that are blank are not permitted.

Retread tyres are permitted on the steer axle.

Retread tyres are permitted on the drive and trailer axles, provided they are certified by the manufacturer that its performance is equivalent to a new tyre.

Tyre load ratings must be appropriate for the axle mass.

Tyres listed herein are specific for PBS application number V210622.

A different list of tyres will apply for other combination types and different PBS application numbers.

Approved tyre options – Option 3

Steer –

- non-brand specific 22.5-inch rim diameter

Drive and Trailer –

		TRAILING UNIT TYRES																		
DRIVE TYRES		Haulmax ATT101 275/70R22.5	Haulmax ATT103 11R22.5	Haulmax ATT308 11R22.5	Hifly HAR515 275/70R22.5	Hifly HH104 11R22.5	Hifly HH301 11R22.5	Hilo 100 11R22.5	Hilo 660 11R22.5	Jinyu JY601 11R22.5	Kumho KRT03 11R22.5	Maxxis MT212 11R22.5	Maxxis UR288 11R22.5	Maxxis UR288 275/70R22.5	NiPon AZ126 11R22.5	Remington R628 II 11R22.5	Remington R666 II 11R22.5	Sailun S665 EFT 11R22.5	Sailun S815 11R22.5	Semperit M422 11R22.5
	GiTi GT276 11R22.5	●			●	●	●	●		●				●	●	●	●	●		
	Goodride CM958 295/80R22.5	●			●	●	●	●						●			●	●		
	Hankook AH22 11R22.5	●	●		●	●	●	●		●				●	●	●	●	●		
	Hankook AH22+ 295/80R22.5	●	●	●	●	●	●	●	●	●	●	●	●	●	●	●	●	●	●	●
	Hankook AH22R 295/80R22.5	●	●		●	●	●	●		●	●			●	●	●	●	●		
	Hankook AM06 11R22.5	●			●	●	●	●						●			●	●		
	Hankook AM06 295/80R22.5	●	●		●	●	●	●		●				●	●		●	●		
	Hankook DH16 11R22.5	●			●	●	●	●						●			●	●		
	Hankook DM03 11R22.5	●			●	●	●	●						●			●	●		
	Hankook DM09 11R22.5	●	●		●	●	●	●		●	●			●	●	●	●	●		
	Hankook Z35A 11R22.5	●			●		●							●			●	●		
	Haulmax ATT307 11R22.5	●	●		●	●	●	●		●	●	●		●	●	●	●	●	●	
	Hifly HH104 11R22.5	●	●		●	●	●	●		●				●	●	●	●	●		
	Hifly HH301 11R22.5	●	●		●	●	●	●		●	●	●		●	●	●	●	●	●	
	Hifly HH308A 11R22.5	●	●	●	●	●	●	●	●	●	●	●	●	●	●	●	●	●	●	●
	Hifly HH312 11R22.5	●	●		●	●	●	●	●	●	●	●		●	●	●	●	●	●	
	Hilo 660 11R22.5	●			●	●	●	●						●	●	●	●	●		
	Jinyu JY601 11R22.5	●	●		●	●	●	●		●	●			●	●	●	●	●		
	Loadrunner LR835D 11R22.5	●			●	●	●	●						●				●	●	
Maxxis UR288 295/80R22.5	●			●	●	●	●						●				●	●		

A cell that is denoted by a '•' indicates a permissible combination of drive and trailing unit tyres. Cells that are blank are not permitted.

Retread tyres are permitted on the steer axle.

Retread tyres are permitted on the drive and trailer axles, provided they are certified by the manufacturer that its performance is equivalent to a new tyre.

Tyre load ratings must be appropriate for the axle mass.

Tyres listed herein are specific for PBS application number V210622.

A different list of tyres will apply for other combination types and different PBS application numbers.

Approved tyre options – Option 3

Steer –

- non-brand specific 22.5-inch rim diameter

Drive and Trailer –

	TRAILING UNIT TYRES															
	Sportrak BYS98 11R22.5	Sportrak SP398 11R22.5	Techking TKAM C+ 11R22.5	Techking TKST IV 275/70R22.5	Toyo M122 11R22.5	Triangle TR656 275/70R22.5	Triangle TR666 11R22.5	Triangle TRS01 11R22.5	Westlake CR926D 11R22.5	Westlake MD738 11R22.5	Windpower HN06 11R22.5	Windpower HN08 11R22.5	Windpower HN266 11R22.5	Windpower WDR23 11R22.5	Windpower WGB20 275/70R22.5	Windpower WGC08 11R22.5
DRIVE TYRES	GiTi GT276 11R22.5	●	●	●	●	●	●	●	●	●	●	●	●	●	●	●
	Goodride CM958 295/80R22.5	●	●	●	●	●	●	●	●	●	●	●	●	●	●	●
	Hankook AH22 11R22.5	●	●	●	●	●	●	●	●	●	●	●	●	●	●	●
	Hankook AH22+ 295/80R22.5	●	●	●	●	●	●	●	●	●	●	●	●	●	●	●
	Hankook AH22R 295/80R22.5	●	●	●	●	●	●	●	●	●	●	●	●	●	●	●
	Hankook AM06 11R22.5	●	●	●	●	●	●	●	●	●	●	●	●	●	●	●
	Hankook AM06 295/80R22.5	●	●	●	●	●	●	●	●	●	●	●	●	●	●	●
	Hankook DH16 11R22.5	●	●	●	●	●	●	●	●	●	●	●	●	●	●	●
	Hankook DM03 11R22.5	●	●	●	●	●	●	●	●	●	●	●	●	●	●	●
	Hankook DM09 11R22.5	●	●	●	●	●	●	●	●	●	●	●	●	●	●	●
	Hankook Z35A 11R22.5	●	●	●	●	●	●	●	●	●	●	●	●	●	●	●
	Haulmax ATT307 11R22.5	●	●	●	●	●	●	●	●	●	●	●	●	●	●	●
	Hifly HH104 11R22.5	●	●	●	●	●	●	●	●	●	●	●	●	●	●	●
	Hifly HH301 11R22.5	●	●	●	●	●	●	●	●	●	●	●	●	●	●	●
	Hifly HH308A 11R22.5	●	●	●	●	●	●	●	●	●	●	●	●	●	●	●
	Hifly HH312 11R22.5	●	●	●	●	●	●	●	●	●	●	●	●	●	●	●
	Hilo 660 11R22.5	●	●	●	●	●	●	●	●	●	●	●	●	●	●	●
	Jinyu JY601 11R22.5	●	●	●	●	●	●	●	●	●	●	●	●	●	●	●
	Loadrunner LR835D 11R22.5	●	●	●	●	●	●	●	●	●	●	●	●	●	●	●
	Maxxis UR288 295/80R22.5	●	●	●	●	●	●	●	●	●	●	●	●	●	●	●

A cell that is denoted by a '●' indicates a permissible combination of drive and trailing unit tyres. Cells that are blank are not permitted.

Retread tyres are permitted on the steer axle.

Retread tyres are permitted on the drive and trailer axles, provided they are certified by the manufacturer that its performance is equivalent to a new tyre.

Tyre load ratings must be appropriate for the axle mass.

Tyres listed herein are specific for PBS application number V210622.

A different list of tyres will apply for other combination types and different PBS application numbers.



Approved tyre options – Option 3

Steer –

- non-brand specific 22.5-inch rim diameter

Drive and Trailer –

		TRAILING UNIT TYRES																		
DRIVE TYRES		Advance GL274A 11R22.5	Aeolus AGC28 275/70R22.5	Aeolus ASR30 275/70R22.5	Aeolus HN06 11R22.5	Aeolus HN08 11R22.5	Aeolus HN266 11R22.5	Austone AT127 11R22.5	Austone AT27s 11R22.5	Austone AT35 11R22.5	Austyre ST01 11R22.5	Boto BT168 11R22.5	Chao Yang CR906 275/70R22.5	Chao Yang CR926D 11R22.5	Chao Yang CR960A 11R22.5	Chao Yang CR976A 275/70R22.5	Continental HSC1 11R22.5	Dunlop 275/70R22.5	GT Radial GT276 11R22.5	GT Radial GT276 275/70R22.5
	NiPon AZ126 11R22.5				●		●					●		●	●			●		
	Remington R628 II 11R22.5		●		●	●	●		●			●	●	●	●	●	●	●	●	●
	Sailun S665 EFT 11R22.5	●	●	●	●	●	●	●	●	●	●	●	●	●	●	●	●	●	●	●
	Sailun S757 11R22.5																	●		
	Sailun S815 11R22.5																	●		
	Sportrak SP997 11R22.5															●		●		
	Techking SuperDM 11R22.5		●		●	●	●	●	●	●			●	●	●	●	●	●	●	●
	Techking TKAM C+ 11R22.5	●	●	●	●	●	●	●	●	●	●	●	●	●	●	●	●	●	●	●
	Techking TKAM II 295/80R22.5	●	●	●	●	●	●	●	●	●	●	●	●	●	●	●	●	●	●	●
	Toyo M122 11R22.5		●		●	●	●	●	●	●			●	●	●	●	●	●	●	●
	Triangle TR666 11R22.5		●		●	●	●	●	●	●	●		●	●	●	●	●	●	●	●
	Triangle TRS01 11R22.5	●	●	●	●	●	●	●	●	●	●	●	●	●	●	●	●	●	●	●
	Westlake AS678 11R22.5				●		●	●					●		●	●			●	
	Westlake MD738 11R22.5		●		●	●	●	●		●			●	●	●	●	●	●	●	●
	Windpower HN08 11R22.5					●		●					●	●	●	●	●	●	●	
	Windpower HN266 11R22.5	●	●	●	●	●	●	●	●	●	●	●	●	●	●	●	●	●	●	●
	Windpower WDR23 11R22.5	●	●	●	●	●	●	●	●	●	●	●	●	●	●	●	●	●	●	●
	Windpower WGC08 11R22.5				●			●					●	●	●	●	●	●	●	●

A cell that is denoted by a '•' indicates a permissible combination of drive and trailing unit tyres. Cells that are blank are not permitted.

Retread tyres are permitted on the steer axle.

Retread tyres are permitted on the drive and trailer axles, provided they are certified by the manufacturer that its performance is equivalent to a new tyre.

Tyre load ratings must be appropriate for the axle mass.

Tyres listed herein are specific for PBS application number V210622.

A different list of tyres will apply for other combination types and different PBS application numbers.

Approved tyre options – Option 3

Steer –

- non-brand specific 22.5-inch rim diameter

Drive and Trailer –

	TRAILING UNIT TYRES															
	GT Radial GT279 275/70R22.5	General Tire RA 11R22.5	GiTi GAR827 11R22.5	GiTi GAR827 275/70R22.5	GiTi GT276 11R22.5	GiTi GT276 275/70R22.5	GiTi GT279 275/70R22.5	Golden Crown AT160 11R22.5	Golden Crown AZ126 11R22.5	Goodride AS678 11R22.5	Goodride CB972 11R22.5	Goodride CR926D 11R22.5	Goodride CR960A 11R22.5	Goodride CR976A 275/70R22.5	Goodyear 275/70R22.5	Hankook AH22 11R22.5
DRIVE TYRES	NiPon AZ126 11R22.5		•							•		•	•	•	•	•
	Remington R628 II 11R22.5	•	•	•	•	•	•			•	•	•	•	•	•	•
	Sailun S665 EFT 11R22.5	•	•	•	•	•	•	•	•	•	•	•	•	•	•	•
	Sailun S757 11R22.5									•					•	
	Sailun S815 11R22.5									•					•	
	Sportrak SP997 11R22.5		•							•		•	•		•	
	Techking SuperDM 11R22.5	•	•	•	•	•	•			•	•	•	•	•	•	•
	Techking TKAM C+ 11R22.5	•	•	•	•	•	•	•	•	•	•	•	•	•	•	•
	Techking TKAM II 295/80R22.5	•	•	•	•	•	•		•	•	•	•	•	•	•	•
	Toyo M122 11R22.5	•	•	•	•	•	•			•	•	•	•	•	•	•
	Triangle TR666 11R22.5	•	•	•	•	•	•		•	•	•	•	•	•	•	•
	Triangle TRS01 11R22.5	•	•	•	•	•	•	•	•	•	•	•	•	•	•	•
	Westlake AS678 11R22.5		•							•		•	•		•	
	Westlake MD738 11R22.5	•	•	•	•	•	•			•	•	•	•	•	•	•
	Windpower HN08 11R22.5		•	•		•				•		•	•		•	
	Windpower HN266 11R22.5	•	•	•	•	•	•	•	•	•	•	•	•	•	•	•
	Windpower WDR23 11R22.5	•	•	•	•	•	•	•	•	•	•	•	•	•	•	•
	Windpower WGC08 11R22.5		•	•		•				•		•	•		•	

A cell that is denoted by a '•' indicates a permissible combination of drive and trailing unit tyres. Cells that are blank are not permitted.

Retread tyres are permitted on the steer axle.

Retread tyres are permitted on the drive and trailer axles, provided they are certified by the manufacturer that its performance is equivalent to a new tyre.

Tyre load ratings must be appropriate for the axle mass.

Tyres listed herein are specific for PBS application number V210622.

A different list of tyres will apply for other combination types and different PBS application numbers.

Approved tyre options – Option 3

Steer –

- non-brand specific 22.5-inch rim diameter

Drive and Trailer –

	TRAILING UNIT TYRES														
	Haulmax ATT101 275/70R22.5	Haulmax ATT103 11R22.5	Haulmax ATT308 11R22.5	Hifly HAR515 275/70R22.5	Hifly HH104 11R22.5	Hifly HH301 11R22.5	Hilo 100 11R22.5	Hilo 660 11R22.5	Jinyu JY601 11R22.5	Kumho KRT03 11R22.5	Maxxis MT212 11R22.5	Maxxis UR288 11R22.5	Maxxis UR288 275/70R22.5	NiPon AZ126 11R22.5	Remington R628 II 11R22.5
DRIVE TYRES	NiPon AZ126 11R22.5	•			•	•	•	•					•	•	•
	Remington R628 II 11R22.5	•	•		•	•	•	•	•	•			•	•	•
	Sailun S665 EFT 11R22.5	•	•	•	•	•	•	•	•	•	•	•	•	•	•
	Sailun S757 11R22.5	•			•								•		
	Sailun S815 11R22.5	•			•		•						•	•	
	Sportrak SP997 11R22.5	•			•	•	•					•			
	Techking SuperDM 11R22.5	•	•		•	•	•	•	•	•			•	•	•
	Techking TKAM C+ 11R22.5	•	•	•	•	•	•	•	•	•	•	•	•	•	•
	Techking TKAM II 295/80R22.5	•	•		•	•	•	•	•	•	•	•	•	•	•
	Toyo M122 11R22.5	•	•		•	•	•	•	•	•			•	•	
	Triangle TR666 11R22.5	•	•		•	•	•	•	•	•	•	•	•	•	•
	Triangle TRS01 11R22.5	•	•	•	•	•	•	•	•	•	•	•	•	•	•
	Westlake AS678 11R22.5	•			•	•	•	•					•	•	
	Westlake MD738 11R22.5	•	•		•	•	•	•	•	•			•	•	•
	Windpower HN08 11R22.5	•			•	•	•	•					•	•	
	Windpower HN266 11R22.5	•	•	•	•	•	•	•	•	•	•	•	•	•	•
	Windpower WDR23 11R22.5	•	•	•	•	•	•	•	•	•	•	•	•	•	•
	Windpower WGC08 11R22.5	•			•	•	•	•					•	•	

A cell that is denoted by a '•' indicates a permissible combination of drive and trailing unit tyres. Cells that are blank are not permitted.

Retread tyres are permitted on the steer axle.

Retread tyres are permitted on the drive and trailer axles, provided they are certified by the manufacturer that its performance is equivalent to a new tyre.

Tyre load ratings must be appropriate for the axle mass.

Tyres listed herein are specific for PBS application number V210622.

A different list of tyres will apply for other combination types and different PBS application numbers.

Approved tyre options – Option 3

Steer –

- non-brand specific 22.5-inch rim diameter

Drive and Trailer –

DRIVE TYRES	TRAILING UNIT TYRES																		
		Sportrak BYS98 11R22.5	Sportrak SP398 11R22.5	Techking TKAM C+ 11R22.5	Techking TKST IV 275/70R22.5	Toyo M122 11R22.5	Triangle TR656 275/70R22.5	Triangle TR666 11R22.5	Triangle TRS01 11R22.5	Westlake CR926D 11R22.5	Westlake MD738 11R22.5	Windpower HN06 11R22.5	Windpower HN08 11R22.5	Windpower HN266 11R22.5	Windpower WDR23 11R22.5	Windpower WGB20 275/70R22.5	Windpower WGC08 11R22.5	Windpower WGC28 275/70R22.5	Windpower WSL06 11R22.5
	NiPon AZ126 11R22.5	•	•	•	•	•			•		•	•		•	•			•	•
	Remington R628 II 11R22.5	•	•	•	•	•	•		•	•	•	•	•	•	•	•	•	•	•
	Sailun S665 EFT 11R22.5	•	•	•	•	•	•	•	•	•	•	•	•	•	•	•	•	•	•
	Sailun S757 11R22.5	•	•	•					•			•						•	
	Sailun S815 11R22.5	•	•	•	•				•			•						•	
	Sportrak SP997 11R22.5	•	•	•	•	•			•			•						•	
	Techking SuperDM 11R22.5	•	•	•	•	•	•	•	•	•		•	•	•	•	•	•	•	•
	Techking TKAM C+ 11R22.5	•	•	•	•	•	•	•	•	•	•	•	•	•	•	•	•	•	•
	Techking TKAM II 295/80R22.5	•	•	•	•	•	•	•	•	•	•	•	•	•	•	•	•	•	•
	Toyo M122 11R22.5	•	•	•	•	•	•	•	•	•	•	•	•	•	•	•	•	•	•
	Triangle TR666 11R22.5	•	•	•	•	•	•	•	•	•	•	•	•	•	•	•	•	•	•
	Triangle TRS01 11R22.5	•	•	•	•	•	•	•	•	•		•	•	•	•	•	•	•	•
	Westlake AS678 11R22.5	•	•	•	•	•			•		•	•		•	•			•	•
	Westlake MD738 11R22.5	•	•	•	•	•	•	•	•	•	•	•	•	•	•	•	•	•	•
	Windpower HN08 11R22.5	•	•	•	•	•			•	•	•	•		•	•			•	•
	Windpower HN266 11R22.5	•	•	•	•	•	•	•	•	•	•	•	•	•	•	•	•	•	•
	Windpower WDR23 11R22.5	•	•	•	•	•	•	•	•	•	•	•	•	•	•	•	•	•	•
	Windpower WGC08 11R22.5	•	•	•	•	•			•	•	•	•		•	•			•	•

A cell that is denoted by a '•' indicates a permissible combination of drive and trailing unit tyres. Cells that are blank are not permitted.

Retread tyres are permitted on the steer axle.

Retread tyres are permitted on the drive and trailer axles, provided they are certified by the manufacturer that its performance is equivalent to a new tyre.

Tyre load ratings must be appropriate for the axle mass.

Tyres listed herein are specific for PBS application number V210622.

A different list of tyres will apply for other combination types and different PBS application numbers.



Declaration

I, Laszlo Bruzsa Chief Engineer, delegate of the National Heavy Vehicle Regulator, approve this PBS Vehicle Approval PBS–V210622 –VA10137.

Laszlo (Les) Bruzsa

Chief Engineer

National Heavy Vehicle Regulator

Dated: 07/11/21

Revision table

N	VA	Vers	Brief description	Date
1	10137	1A	First issue.	07/11/21

General access for a specified PBS vehicle

The vehicle combination(s) listed in this PBS Vehicle Approval qualify for general access to the road network under the *specified PBS vehicle* provisions of the Heavy Vehicle National Law. A specified PBS vehicle must comply with all applicable requirements of Schedule 1 of the *Heavy Vehicle (Mass, Dimension and Loading) National Regulation* (HV(MDL)NR).

Specified PBS vehicle mass limits

1. The maximum allowable mass of a specified PBS vehicle is the lesser of the maximum PBS Level 1 GML stated in this Vehicle Approval and the relevant mass limit prescribed in Part 1, section 2, Schedule 1 of the HV(MDL)NR.
2. The maximum allowable mass of an axle group on a specified PBS vehicle is the lesser of the maximum PBS Level 1 GML axle group mass limit stated in this Vehicle Approval and the axle group mass limit prescribed in “Table 1—Axle mass limits table” in Schedule 1 of the HV(MDL)NR.
3. The maximum allowable mass between any two axles or axle groups on a specified PBS vehicle is the relevant prescribed mass limit in “Table 2—Axle spacing mass limits general table” in Schedule 1 of the HV(MDL)NR.

Specified PBS vehicle operating conditions

1. When operating as a general access vehicle, a specified PBS vehicle must comply with all operating conditions of its Vehicle Approval that apply at Level 1. This includes payload heights, the drive axle mass requirement, approved tyre options and all operating conditions that do not specify a level of access.
2. The regulation includes a requirement about towing ratios. Loading and unloading must be managed so that the trailer mass does not exceed the mass of the towing vehicle.

For more information

For more information visit our [PBS vehicle access permit page](#) under Access management.

Disclaimer

The information on this page is general guidance only and does not constitute legal advice. Consider whether you require Independent legal advice to address your particular circumstances.



Important information

As per Heavy Vehicle National Law Section 153, the driver must keep in the driver's possession a copy of this Vehicle Approval and be able to produce it for inspection by compliance officers. Penalties apply.

If changes or modifications are required, these are limited to the specifications contained in the relevant PBS Design Approval and the Application for Design Approval Part A and B. Contact the applicant (see the cover page on this document) for information related to the allowed specifications.

A change of components and/or dimensions must be certified by an approved PBS certifier and an updated version of this Vehicle Approval must be obtained. A change of tyres, outside of the list contained on this Vehicle Approval, also requires approval but will not require an inspection by a PBS certifier.

Road access

This is not an authorisation to access the road network. You must comply with the relevant Notice or obtain an access permit.

Please note that if you add vehicles to a PBS Vehicle Approval you will need to update the access permit to reflect the latest Vehicle Approval. If the new vehicles have different masses or dimensions to what is already approved, the NHVR will have to seek Road Manager consent again; which may extend the time required to issue the new permit.

For more information on the PBS Truck and Dog Notice visit [National class 2 PBS level 1 and 2A truck and dog trailer authorisation notice 2016](#).

To apply for an access permit, visit the [NHVR Portal](#). You must supply a route ID when applying for an access permit. Use Route Planner to obtain your route ID, you can do this as part of the permit application process in the [NHVR Portal](#).

For further assistance please visit our website at www.nhvr.gov.au or call 1300 MYNHVR (1300 696 487).

For queries relating to this document please contact the PBS Coordinator at pbs@nhvr.gov.au.

Transfer of Vehicle Approval

When applying for an access permit for a PBS vehicle, a PBS Vehicle Approval must be in the name of the company that operates the vehicle on the road.

If/ when a PBS combination is sold, the PBS Vehicle Approval has to be transferred across to the new owner.

To transfer a PBS Vehicle Approval to a new owner, use a [Vehicle Approval transfer application form](#).