

INSTALLATION STEPS:

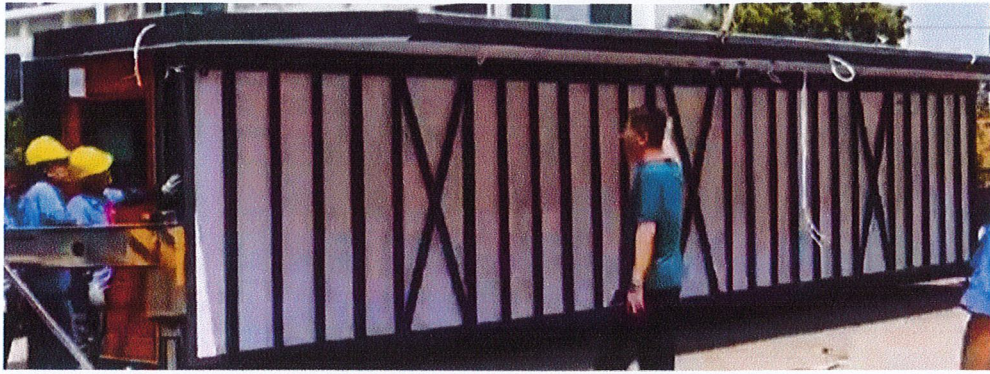
A: Place and level



1.the house installation foundation with the level to find the level 2.lift the mobile house to the installation position, and replace the two packing wheels with section bases. Take out the level from the house. Place the level on the front and side of the mobile home, and according to the level, Adjust the 12pcs adjusting bases at the bottom of the house to make the base of the house horizontal.

B: Open the folding top on both sides





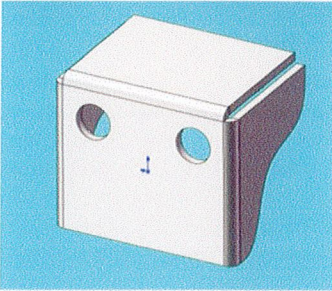
When opening the folding top, grasp the side of the folding top with one hand and slowly pull the folding top away.

Attention:

1: when opening the folding top, all personnel are not allowed to stand on the opposite side 2: The staff shall not be covered by the folding top during the entire development process.

C: Open fold bottom





1. Release the ratchet, and put down the folded bottom. 2: Screw on 6pcs adjusting bases at the bottom of each fold on both sides 3: Install 16pcs folding wall bottom supports on both sides of the folded bottom, 2pcs M10*20 outer hexagonal bolts (stainless steel) And gasket, total 32 sides. 4: 4pcs (20×68×3000mm solid wood plastic strip) on both sides of the folded bottom, and the self-tapping nail is hit through the wood plastic board of the support.

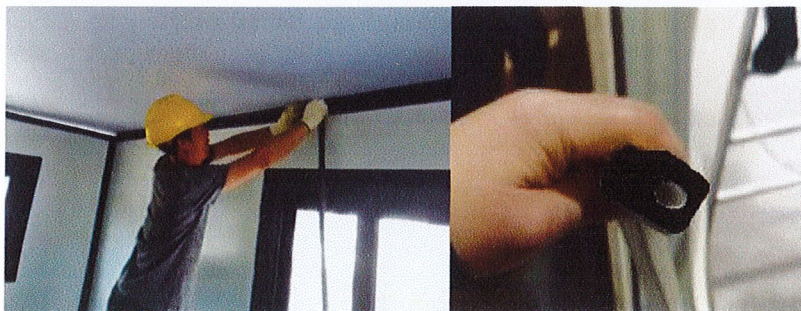
D: Open the left and right fold walls

After open the fold wall At the top of the folding wall panels on both sides, fix the solid wood plastic strips of 20×20×3000mm in the middle of the board with 8 self-tapping nails, 4 on each side. The WPC board is tightly sealed on both sides (width 20mm, height 20mm).



E: Pressure sealing strip

Wall panel internal pressure seal (width 20mm, height 20mm). Gap between top plate and left and right wall panel. Outer pressure sealing strip for ground gap between front and rear wall panels and left and right wall panels (slot width 20mm, height 28mm).





F: The Angle between the front and back wall panels and the left and right wall panels is fixed with a fixed Angle iron, one for each corner, and four self-tapping nails. The Angle between the two partitions and the left and right wall panels is fixed with a fixed Angle iron, one for each corner, and four self-tapping nails.

