



DISCLAIMER: Second-Hand Plant Condition and Safety

This document is Jungheinrich Australia Pty Ltd's (Jungheinrich) official notice that the second-hand plant offered for sale through this auction may contain faults or deficiencies that could pose risks to health and safety.

Important Information

Condition of the Plant

Given the plant is second-hand, please be aware it may include wear and tear, or be missing safety features that were not present or required at the time of original manufacture.

Jungheinrich has taken all reasonably practicable steps to identify any faults in the plant. The enclosed Condition Report sets out the current condition of this plant, including any identified faults.

Identified specific faults are included in the supplied condition report

Operational Safety Notice

It is the responsibility of the purchaser to ensure that the plant is inspected, serviced, and, if necessary, modified to meet current safety standards before use. The plant should not be used until all identified faults have been rectified and the equipment is deemed safe for operation.

Manufacturer Information and Records

Any available records, including:

- information concerning each purpose for which the plant was designed or manufactured;
- information concerning any conditions necessary to ensure that the plant is without risks to health and safety when used for the purposes for which it was designed or manufactured or when carrying out any activity; and
- calculations, analysis or testing records, including data sheets, test certificates, operation manuals, service reports, and safety manuals or guides are enclosed with the plant. Purchasers are encouraged to review this documentation thoroughly

By participating in this auction and purchasing the second-hand plant, the purchaser acknowledges receipt of this notice and accepts full responsibility for ensuring the plant is safe for use.

For any questions please contact Jungheinrich

De-Hire Inspection Check

31/05/2025 / 383041 / Sydney / UE / Battery Electric / 98171863 /
Larry Labayo

Complete

Serial Number	98171863
Hour Meter Read	7746 hr
Service Job No.	383041
Location	Sydney
Conducted on	31/05/2025 6:57 AM ACST
Conducted By	Larry Labayo
Truck Category	UE
Truck Make	Battery Electric
Equipment Exterior	

General Appearance / Paintwork

DAMAGE

WEAR & TEAR

Scratches all over the unit



Photo 1



Photo 2



Photo 3



Photo 4

Include Images of the Front, Rear & Sides of the Unit



Photo 5



Photo 6



Photo 7



Photo 8



Photo 9

Wheels/Tyres

Front Wheels / Tyres

OK

Rear Wheels / Tyres

WEAR & TEAR

Plastic wrap

Wheel Bearings

WEAR & TEAR

Caster wheel plastic wrapping on the bearing

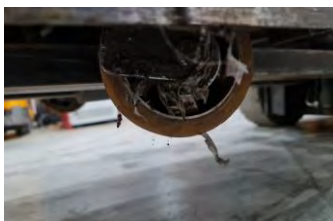






Photo 10



Photo 11

Chassis/Structure	
Overhead Guard	N/A
Chassis	DAMAGE
Dent	
	
Photo 12	
Battery Cover	DAMAGE
Dent	
 	
Photo 13 Photo 14	
Driver Seat & Fixing	N/A
Panels and Covers (Left & Right)	OK
Accessories (Mirrors, Blue Lights)	N/A
Windscreen	N/A
Rear Screen	N/A
Arm Rest	N/A
Connection Elements	WEAR & TEAR
	
Photo 15	
Drive Unit	

Transmission Operation	N/A
Battery end of life	
Transmission Noise & Leaks	N/A
Drive Motor Condition	N/A
Brake	
Brake Function & Adjustment	N/A
Steering	
Steer Motor Operation/Noise	N/A
Steering Cylinder	N/A
Steer Axle	N/A
Steering Wheel/Controls	N/A
Hoist Frame/Load Lifting Device	
Mast To Full Height & Bearings	N/A
Forks & Fork Carriage	N/A
Lift Chains Free & Secondary	N/A
Hydraulic Cylinder Free Lift	N/A
Hydraulic Cylinders Secondary Light Right & Left	N/A
Hydraulic Hoses Conditions	OK
Reach Carriage & Cylinder	N/A
Sideshift Carriage & Cylinder	N/A
Tilt Function & Cylinders	N/A
Hydraulic System	
Valve Block	N/A
Pump Motor Operation	N/A
Battery dead	
Pump Operation	N/A
Battery dead	
Hydraulic Function Levers	N/A

Battery dead

Electric System

Multi-pilot & Solo-pilot

N/A

Strobe & Working Lights / Alarms

N/A

Drive Display, Console & Instruments

N/A

Battery dead

Main Contactor & Connectors

N/A

Battery dead

Charger Condition & Operation

OK

Battery

Battery Condition & Cables

WEAR & TEAR

Battery dead

Battery Carriage

WEAR & TEAR



Photo 16



Photo 17

Battery Lock System

OK

Additions or Attachments

Any other related attachments

No

Were any issues identified?

Wear & Tear

Damage

(Internal) Parts required - BE

(External) Parts Required

Paint

Dent repair

Media summary



Photo 1

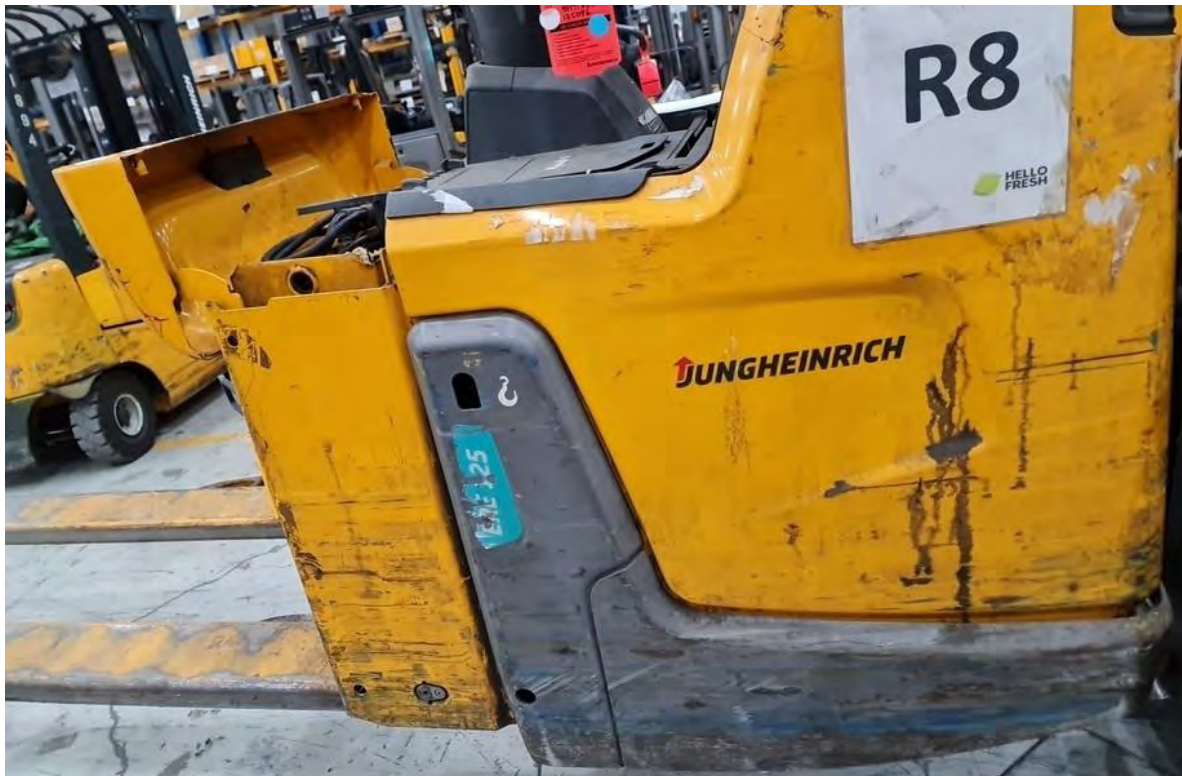


Photo 2



Photo 3



Photo 4



Photo 5



Photo 6



Photo 7



Photo 8



Photo 9



Photo 10



Photo 11



Photo 12



Photo 13



Photo 14



Photo 15



Photo 16



Photo 17