



DISCLAIMER: Second-Hand Plant Condition and Safety

This document is Jungheinrich Australia Pty Ltd's (Jungheinrich) official notice that the second-hand plant offered for sale through this auction may contain faults or deficiencies that could pose risks to health and safety.

Important Information

Condition of the Plant

Given the plant is second-hand, please be aware it may include wear and tear, or be missing safety features that were not present or required at the time of original manufacture.

Jungheinrich has taken all reasonably practicable steps to identify any faults in the plant. The enclosed Condition Report sets out the current condition of this plant, including any identified faults.

Identified specific faults are included in the supplied condition report

Operational Safety Notice

It is the responsibility of the purchaser to ensure that the plant is inspected, serviced, and, if necessary, modified to meet current safety standards before use. The plant should not be used until all identified faults have been rectified and the equipment is deemed safe for operation.

Manufacturer Information and Records

Any available records, including:

- information concerning each purpose for which the plant was designed or manufactured;
- information concerning any conditions necessary to ensure that the plant is without risks to health and safety when used for the purposes for which it was designed or manufactured or when carrying out any activity; and
- calculations, analysis or testing records, including data sheets, test certificates, operation manuals, service reports, and safety manuals or guides are enclosed with the plant. Purchasers are encouraged to review this documentation thoroughly

By participating in this auction and purchasing the second-hand plant, the purchaser acknowledges receipt of this notice and accepts full responsibility for ensuring the plant is safe for use.

For any questions please contact Jungheinrich

De-Hire Inspection Check

02/06/2025 / 383071 / Sydney / UE / IC / TCB520753 / Terrence Pinchin

Complete

Serial Number	TCB520753
Hour Meter Read	3938.6 hr
Service Job No.	383071
Location	Sydney
Conducted on	02/06/2025 8:22 AM ACST
Conducted By	Terrence Pinchin
Truck Category	UE
Truck Make	IC
Equipment Exterior	
General Appearance & Condition	WEAR & TEAR

Include Images of the Front, Rear & Sides of the Unit



Photo 1



Photo 2



Photo 3



Photo 4



Photo 5

Wheels/Tyres	
Front Wheels / Tyres	WEAR & TEAR
Rear Wheels / Tyres	WEAR & TEAR
Wheel Studs & Nuts	OK
Chassis/Structure	
Chassis	OK
Driver Seat & Fixings	OK
Engine Canopy, Floor Plate & Mat	WEAR & TEAR
Guards, Covers & Panels (Right & Left)	WEAR & TEAR
Overhead Guard & Fixings	WEAR & TEAR
Windscreen (Front & Rear) & Wipers	N/A
Fasteners & Securing Points	WEAR & TEAR
Traction Drive	
Transmission Forward & Reverse Drive Unable to check unit not working	N/A
Inching Pedal & Valve Unable to check unit not working	N/A
Front Axle Unable to check unit not working	N/A
Differential Unable to check unit not working	N/A
Exhaust System	
Complete Muffler System	WEAR & TEAR
Exhaust Manifold	WEAR & TEAR
Engine	
Start & Run Engine Unable to check unit not working	N/A
Engine Block (Oil leaks) Unable to check unit not working	N/A

Ignition System	N/A
Starter Condition Unable to check unit not working	N/A
Alternator Condition Unable to check unit not working	N/A
Cooling System	
Radiator & Hoses	WEAR & TEAR
Fan & Fan Belt	WEAR & TEAR
Water Pump & Thermostat Unable to check unit not working	N/A
Cooling System Hoses	WEAR & TEAR
Exhaust System	
Complete Muffler System Unable to check unit not working	N/A
Exhaust Manifold Unable to check unit not working	N/A
Fuel System (if DFG)	
Injection Pump & Fuel Lines Unable to check unit not working	N/A
Fuel Filter Runs on gas	N/A
Gas System (if TFG)	
Gas Converter & Hoses Unable to check unit not working	N/A
Bottle Connection	WEAR & TEAR
Bottle Bracket	WEAR & TEAR
Brake	
Brake Function & Adjustment Unable to check unit not working	N/A
Handbrake Function	N/A

Unable to check unit not working

Steering

Steering Cylinder

N/A

Unable to check unit not working

Steer Axle

WEAR & TEAR

Steering Wheel/Controls

N/A

Unable to check unit not working

Mast

Type (DZ, ZZ ,ZT)

N/A

Unable to check unit not working

Forks Condition

WEAR & TEAR

Free Lift & Secondary Lift Chains

N/A

Unable to check unit not working

Free Lift Cylinder & Secondary Lift Cylinders

N/A

Unable to check unit not working

Sideshift Carriage & Cylinder

N/A

Unable to check unit not working

Load backrest Condition

DAMAGE

Loadguard bent



Photo 6

Tilt Function & Cylinders

N/A

Unable to check unit not working

Mast Mounting Points

WEAR & TEAR

Hydraulic System

Valve Block

N/A

Unable to check unit not working

Hydraulic Functions & Levers	N/A
Unable to check unit not working	
Hydraulic Pump	N/A
Unable to check unit not working	
Hydraulic Hose Condition	WEAR & TEAR
Electric System	
Multi-pilot & Solo-pilot	N/A
Unable to check unit not working	
Strobe & Work Lights	N/A
Unable to check unit not working no battery	
Dashboard Display	N/A
Unable to check unit not working no battery	
Reverse Alarm	N/A
Unable to check unit not working no battery	
Main Battery Isolator Switch	N/A
Unable to check unit not working no battery	
Battery Condition	N/A
No battery	
Head, Tail & Reversing Lights	N/A
No battery	
Additions or Attachments	
Any other related attachments	No
Were any issues identified?	Equipment Damage
Stripped and cannibalised	

Media summary



Photo 1

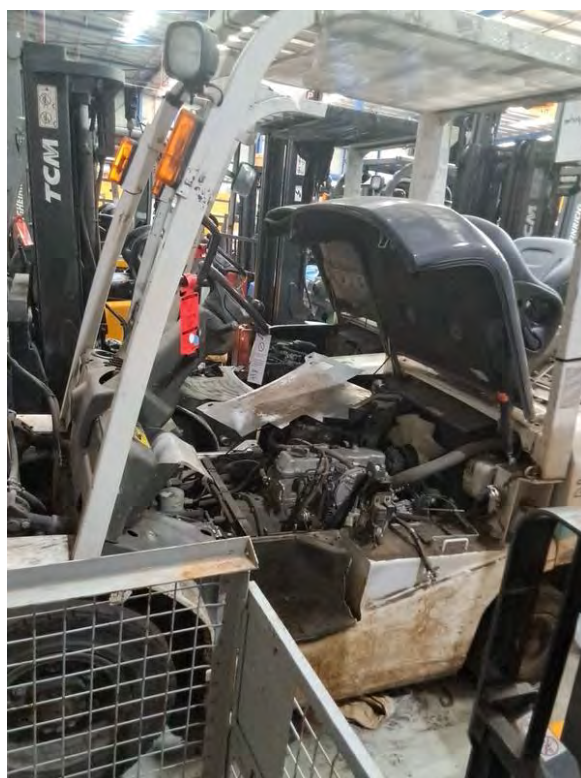


Photo 2



Photo 3



Photo 4



Photo 5



Photo 6