

Models:

SPPS-96L-P2-240
 SPPS-96R-P2-415
 SPPS-96L-P2-240
 SPPS-96R-P2-415

Code explanation:

SPPS = Standard Product Power Soak
 96 = Overall length (inches)
 X = L – Left to right operation
 = R – Right to left operation
 P2 = P200 control system
 Y = 240 – 240V electrical connection
 = 415 – 415V electrical connection

GENERAL SPECIFICATION

- 2mm 304 stainless steel construction throughout all tanks, drain boards and splashbacks.
- Low profile wash jets every 150mm of wash tank.
- Uniform wash action throughout entire volume of wash tank.
- Stainless steel self-draining pump housing and impeller.
- The heater is located in the wash tank along the rear wall under the perforated intake guard.
- 2330-watt 240v model
- 7000-watt heater 415v model.
- The factory preset value for the wash tank water temperature is 46°C and can be field-modified +/- 5° C
- Powered utensil basket optional.
- Watermarked ½" faucet assemblies.
- Watermarked ½" pre-rinse spray assemblies.
- Rear exit stainless steel ball valve drains for 100% drainage.
- Motor horsepower is proportional to the size of the tank.
- Modular design allows for quick and easy access to motor pump and all major components
- Average flow rate per wash jet is approximately 150 LPM.
- Wash tank supported by 32x32x1.2 304 stainless steel legs and adjustable feet.
- All wetted parts of the pump assembly are stainless steel.
- Continuous heavy duty (TEFC) motors (high service factor) are provided with all pump assemblies.
- Complies with Australian Electrical requirements AS NZS 60335.1, AS 3000, AS 3760. Complies with Sydney Water trade waste guidelines.

OPTIONAL EQUIPMENT

- Sheet pan racking system.
- Gastronorme racking system.
- Pizza pan racking system.
- Powered utensil basket.
- Integrated chemical dispenser.
- Drain connection kit.
- Pan drying rack.
- Removable chemical shelf.
- JBZ mechanical join.

SYSTEM CONFIGURATION

Overall Size:	2435mm long x 865mm deep x 1200 high.
Soiled End:	25mm wide x 780mm FB x 30mm deep.
Scrape Tank:	305mm wide x 567mm FB x 100mm deep.
Wash Tank:	915mm wide x 728mm FB x 530mm deep.
Rinse sink:	355mm wide x 728mm FB x 350mm deep.
Sanitiser Sink:	405mm wide x 728mm FB x 350mm deep.
Drain End:	430mm wide x 780mm FB x 30mm deep.
Power Supply:	415v 16A three phase. 240v 20A single phase.
Controller:	Model P200 solid state electronic.
Pump:	1.5 kW. (2 Hp.)
Plumbing:	1 only swivel faucet. 1 only overhead pre rinse spray head.

Due to continuous product research and development, the information contained herein is subject to change without notification.

SPPS-96X-P2-YYY

Models:

SPPS-96L-P2-240

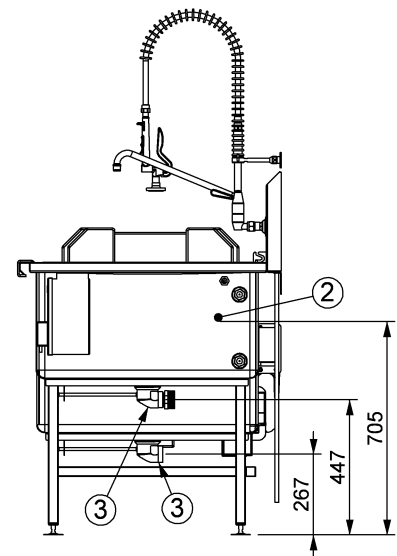
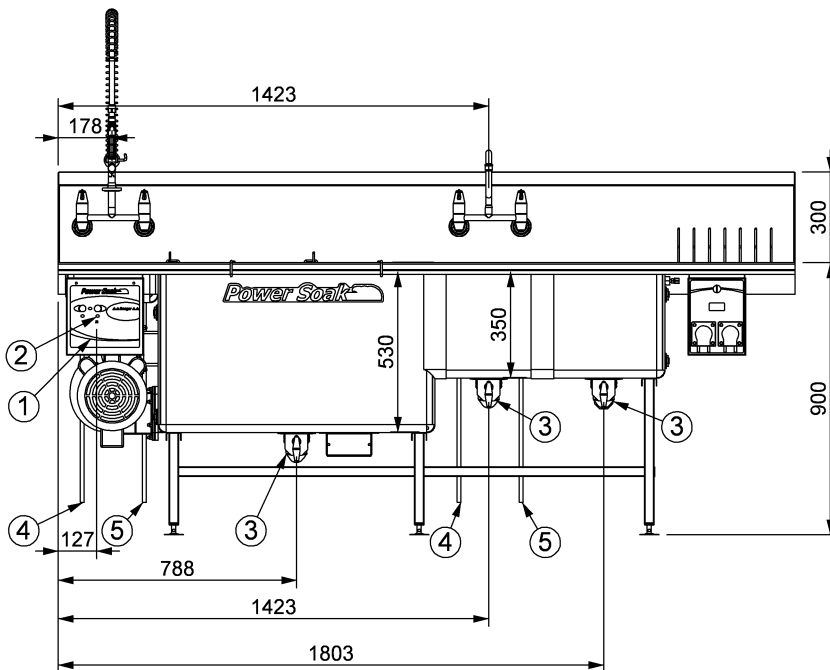
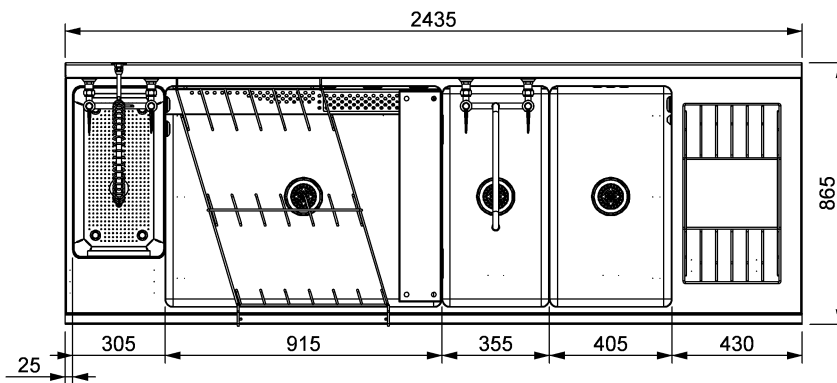
SPPS-96R-P2-415

SPPS-96L-P2-240

SPPS-96R-P2-415

Code explanation:

SPPS	= Standard Product Power Soak
96	= Overall length (inches)
X	= L – Left to right operation = R – Right to left operation
P2	= P200 control system
Y	= 240 – 240V electrical connection = 415 – 415V electrical connection



1 Electrical Connection:	Single Phase 240v 20amp 50Hz 3 Phase 415V + N + E 16A 50Hz
2 Waste Connection:	2" BSP Male
3 Waste Connection:	1½" BSP Male
4 Water Connection Hot:	½" Copper
5 Water Connection Cold:	½" Copper

Due to continuous product research and development, the information contained herein is subject to change without notification.