

9th March 2022



With 160kW Electric Power Package, 4.5m tubular pylon & Four Point Structural Base.

SENcon Control> - NEW

- Sennebogen SENcon fitted as standard
- Allows operator to configure machine functions & operating characteristics to suit the application
- Detailed fault alerts & tracking
- USB port for upgrading and or exporting of data
- Full machine functions are still available in event the SENcon system is down
- Ability to monitor and diagnose machine remotely when used in conjunction with SENtrack

SENtrack> - NEW

- GPS enabled monitoring system with 10mb per month x 2 years data included
- Provides ability to remotely monitor general machine operations including machine hours, efficiency, utilisation, location & tracking

Boom >

- 20m materials handling boom [type K20] consisting of 11m compact straight boom, and curved grab handling stick of 9.4m
- Boom & stick cylinders fitted with safety check valves & end position cushioning.
- End position shut off for boom up/down and stick in/out function
- Ball valve for hydraulic piping grab open/close and grab rotating

Undercarriage >

- 4.5m Tubular Heavy Duty Pylon (5m total)
- Four Point Structural Steel Base 4m x 4m With Integral 0.5m high flange ring
- 20ton of additional counterweight

Upper Carriage Rotation >

- Heavy duty 360 degree continuous upper carriage rotation
- Rotation is variable from 0 – 8 RPM
- **Heavy duty double row ball slew ring that enables the bearing to bear greater axial force and tipping moment.**
- Dual external slew drives fitted as standard on 835 models for increased torque
- Pinion lubrication for slewing ring

Engine / Power >

- Power package with electric motor, 160 Kw / 400 V / 50 Hz
- Engine start up via star delta switch
- Total connect load 280 kVA, fuse protection in the machine's switch box of 355A / in combination with magnet system 400A at 400V
- When the electric motor is switched on, at start up time, a temporary (5 to 10 seconds) double or triple demand of the nominal voltage is required from the power network
- **Counter rotation of fan [Reverse Fan]**

Hydraulics >

- Load sensing hydraulic system, equipped with pressure cut off function and energy saving flow on demand control
- All functions can be operated parallel & or independent of each other with precise control
- Flow rate of 740 litres / minute
- Max working pressure: 350 bar
- Hydraulic tank capacity: 500 litres
- **Sennebogen Hydro-Clean system fitted** – extending service life out to a minimum of 4000 hours subject to regular sampling
- **Automatic central lubrication system fitted**

Cabin >

- SENCON – Sennebogen control and diagnostic system
- Hydraulically elevating Sennebogen MAXCab **Industry** roof extended offering excellent all-round visibility, comfort & noise insulation.
- NEW-Cabin elevation controlled by mini joystick offering better control.
- E270 Cabin variable in height to 2700mm [giving a driver's eye height of approximately 10,300mm]
- Emergency cabin lowering function accessible at both ground level and inside cabin
- **FOPS guard [tier 2] fitted**
- **Heavy duty windscreen guard**
- **Bullet proof front windscreen**
- Heated air suspension seat with compressor, fully adjustable in height / suspension, seat depth / angle with adjustable lumbar support, 2 inch seat belt, head & arm rests
- Radio with MP3/USB/Bluetooth
- Tinted safety glass [factory fit]
- Windscreen wiper / washer for front windscreen
- Front windscreen with sun protection
- Skylight with sun protection
- Sliding cabin door with sliding window
- Climate control air conditioning system with 8 adjustable air vents
- Joystick control
- **Full catwalk gallery surrounding left hand, right hand and rear of upper carriage. Catwalks set down approx. 450mm to allow for service access**
- **Access ladder to catwalk & cabin area**
- **Safety hand rail at the upper structure, tiltable for transportation, electric engine**
- **2 x Safety Cameras fitted, 1 pc rear & 1 pc right-hand side of Upper carriage with 7" split screen monitor mounted inside cabin**

Lighting >

- 2 x headlights mounted to upper carriage
- 2 x Rear lights & 2 x lights integrated into front LHS of cab roof
- 1 x LED headlight with magnetic fixing and cable in maintenance area
- 1 x LED headlight mounted on cabin rear facing
- 1 x LED headlight mounted on boom down side
- 1 x LED headlight mounted on boom upper side
- 2 x LED headlights mounted both sides stick in upper positions
- 1 x LED headlight mounted on counterweight rear facing
- 1 x Rotating orange beacon mounted to top/rear of cabin

Accessories >

- Tool Kit
- Operators & Spare Parts Manuals
- Company Signage fitted to stick and upper carriage
- Special paint finish IMMIX colours
- 2 x Fire extinguisher (1 x 4.5kg / 1 x 9kg)
- Basic UHF

Attachment Option> Priced separately

The Rotobec Orange Peel Grab (Grapple) is recognised as the industry leader in both innovation and toughness. Their sleek, yet robust, design and standard 360° rotation make them a dream to own and operate. Mag-Grab configurations, Rotobec Orange Peel Grapples push the boundary of possibilities to a whole new level.

Equipped with Rotobec's own high-pressure cylinders, and one of the industry's only self-contained hydraulic fluid channelling system, these beasts are quickly revolutionizing the world of scrap handling. Increase your up-time, reduce your maintenance costs and dominate your competition.



All Rotobec grabs quoted are fitted with **Rotobec's own fully sealed rotator**

Rotobec Features:

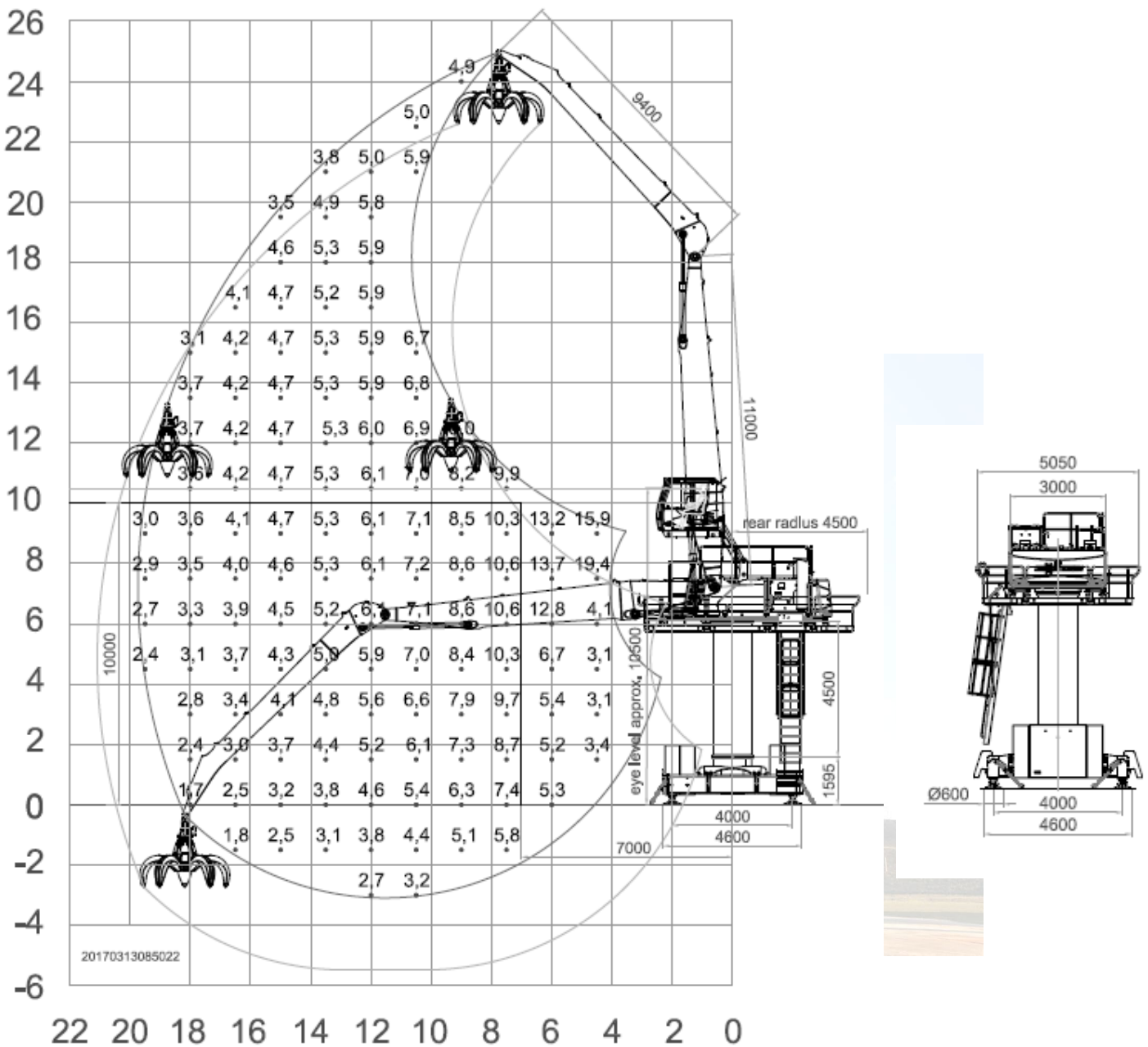
- Self-contained hydraulics – the cylinder contains internal channelling that eliminates the need for a return hose
- Integrated cylinder guard – innovative self-contained cylinder has full 360° protection
- Advanced hose protection
- Fully sealed rotators, with a fully supported pinion gear and external drive motor
- Adjustable stops – adjust for tyne tip wear

SPECIFICATIONS	
Description	Item 2
Model	OP5S090 – RT502
Type	Orange Peel Grab
Capacity (cbm)	0.9
Tyne	5
Weight	2,164kgs
Maximum Rotator Lifting Capacity;	22,680kgs
360 Degree Rotation	Yes
Semi Open Shell Design	Yes
Closed height	2,543mm
Closed width (measured across the widest point)	1,562mm
Open width (measured across the widest point)	2,660mm
Open width (measured across the narrowest point)	2,432mm

Information including specifications subject to change without notice

Machine Capacities >

- Please refer to load chart below with a K20 Boom for Kinematic position 1.
- Schematic diagram also provided in separate attachment.



Alle Werte sind in Tonnen (t) angegeben und betragen gemäß ISO 10567 75% der statischen Kippkraft bzw. 87% der hydraulischen Hubkraft. Sie gelten auf festem und ebenem Untergrund 360° schwenkbar. Arbeitsgeräte wie Mehrschalengreifer, Magnet etc. sind Teil der Traglast. Für den Lasthebebetrieb sind entsprechend der CE-Richtlinien Rohrbruchsicherungen und eine Lastmomentbegrenzung erforderlich.

Lift capacities are stated in metric tons. Indicated loads are based on ISO 10567 and do not exceed 75% of tipping and 87% of hydraulic capacity. Machine on firm, level supporting surface. Working equipment like orange peel grab, magnet plate etc. are part of the lifting capacity. In the European Union excavators have to be equipped with a load moment limiter and automatic check valves, when they are used for lifting operations.

		Unit	Qty	Unit Price (excluding GST)	Extended Price (Excluding GST)	Delivery to Site
Equipment Supply						





Guideline for Stationary and Special-Purpose Machines

The present guideline forms an integral part of the confirmation of order and is to be signed and returned along with it.

The following is to be provided by the purchaser of stationary machines:

1. Routing to the site, and connection, of electric power supply
2. Any safety, sound insulation, or environmental protection features not offered, or of special design, respectively
3. Services provided by customer as expressly specified in the offer
4. Permits for putting-up and operation of the facility
5. Worksite power supply and auxiliary devices
6. Any structural calculations of the foundations, substructures, pedestals, etc. that may be required
7. Services provided by customer as agreed, inclusive of construction of the substructures complete with installation or anchorage of the connecting member (e. g. flange ring, mounting surface) required for erection of the machine, must be completely finished by the date of installation.
8. With 4-point structural-steel base the mounting surface has to be provided by customer. Possibly necessary anchorage or rigging has to be provided by customer.
9. If an all-round gallery has been ordered for the machine, it will be supplied by Sennebogen. Any mounting facilities, steps, ladders, other platforms, etc. required in addition will have to be provided by customer.
10. Provision of work platforms, mounting facilities, etc. conforming to the relevant safety regulations of industrial accident insurance institutions, etc., and providing or installing them so as to allow proper machine installation to be performed. This is equally applicable for any later service or repair work.
11. When electric engine is switched on, start up time, a temporary (5 to 10 sec.) double or triple demand of the nominal voltage is required from the electricity network. Power feed and electric network has to be provided by the customer concerning this demand.

Signed by purchaser upon confirmation of order.

Name: _____

Signature: _____ Date: _____