



DISCLAIMER: Second-Hand Plant Condition and Safety

This document is Jungheinrich Australia Pty Ltd's (**Jungheinrich**) official notice that the second-hand plant offered for sale through this transaction (direct sale or auction) may contain faults or deficiencies that could pose risks to health and safety.

Important Information

Safety & Compliance of the Plant

Given the plant is second-hand, please be aware it may include wear and tear, or be missing safety features that were not present or required at the time of original manufacture.

Jungheinrich has taken all reasonably practicable steps to identify any faults in the plant. The **enclosed** Condition Report sets out the current condition of this plant, including any identified faults.

While all efforts have been made to identify faults, there may be other faults present that did not show up at time of inspection

Operational Safety Notice

The plant should not be used until all identified faults have been rectified and the equipment is deemed safe for operation.

It is the responsibility of the purchaser to ensure that the plant is inspected, serviced, and, if necessary, modified to meet current safety standards before use.

By participating in this sale and purchasing the second-hand plant, the purchaser acknowledges receipt of this notice and accepts full responsibility for ensuring the plant is safe for use.

Operating condition of the plant

Note: this condition report is a safety report only and does not represent overall appearance or operating condition of the plant

For any questions please contact Jungheinrich



Used Sale Safety & Compliance Check

MHE-000122 / 124195 / Wayne Klein / 24/12/2025 / Jungheinrich / EFG218K

Complete

Flagged items	0
Report ID	MHE-000122
Technician Name	Wayne Klein
Conducted on	24/12/2025 9:04 AM AEDT
Branch	Sydney
Unit Details	
Equipment No.	124195
Brand	Jungheinrich
Model	EFG218K

Include Images of the Front, Rear & Sides of the Unit



Photo 1



Photo 2



Photo 3



Photo 4



Photo 5




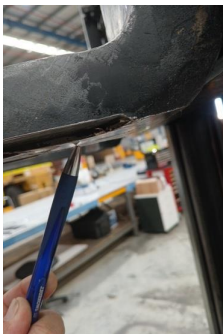


Observations Summary		
Truck Category	Category 3 - Electric Counterbalance	
Emergency Stop, Horn/Warning device, lights, reverse alarm and flashing lights operational LHS FR PARK LIGHT OUT	Yes	
Seat switch and seat belt switch fitted to check presence of operator & working in sequence?	Yes	
Seat is secure and seat belt is in serviceable condition?	Yes	
Mast switch operation for travel speed reduction to 3kmh above specified height	Yes	
Are brakes and park brake functioning correctly?	Yes	
Are tyre treads within limits and/or free from damage? Some cracks	Yes	
		
Photo 6	Photo 7	Photo 8
Are fork tynes in good condition and within specification?	Yes	
		
Photo 9	Photo 10	Photo 11
Are mast chains in good condition, within specification and working correctly? 2 3/4% wear - replacement required	No	



Photo 12

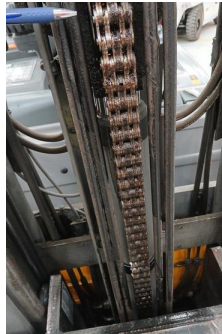


Photo 13



Photo 14

Are all controls inc. lift, tilt & sideshift/auxilliary functions working correctly

Yes

Confirm safety systems not bypassed or malfunctioning?

Yes

Additional Observations & Actions

List any other notable defects or faults e.g. ROPS/FOPS damage etc.

Charger not tested, Fitted with euro plug.

Forklift fitted with aftermarket battery

Mast decal does not have seat belt interlock depiction, missing decals on finger lever operations lift tilt etc.. fire extinguisher due for inspection.



Photo 15



Photo 16



Photo 17



Photo 18



Photo 19

Technician Sign off



wayne klein
24/12/2025 9:53 AM AEDT

Media summary



Photo 1



Photo 2



Photo 3



Photo 4



Photo 5



Photo 6



Photo 7



Photo 8



Photo 9



Photo 10



Photo 11



Photo 12

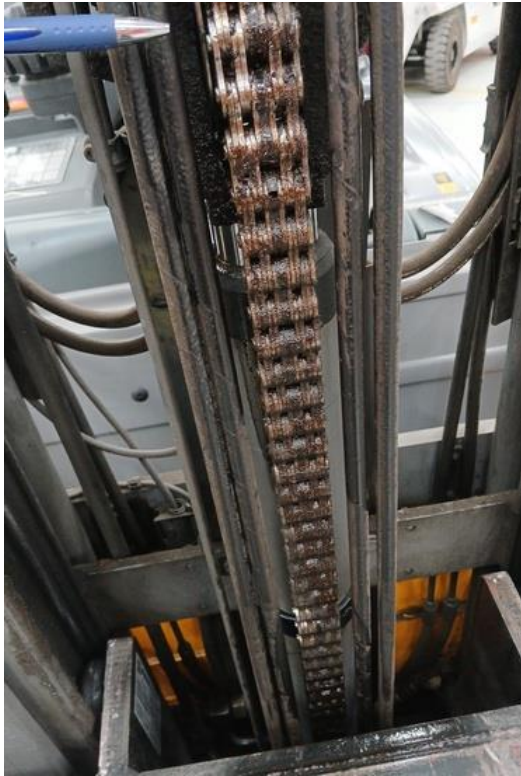


Photo 13



Photo 14



Photo 15



Photo 16



Photo 17



Photo 18



Photo 19