



DISCLAIMER: Second-Hand Plant Condition and Safety

This document is Jungheinrich Australia Pty Ltd's (**Jungheinrich**) official notice that the second-hand plant offered for sale through this transaction (direct sale or auction) may contain faults or deficiencies that could pose risks to health and safety.

Important Information

Safety & Compliance of the Plant

Given the plant is second-hand, please be aware it may include wear and tear, or be missing safety features that were not present or required at the time of original manufacture.

Jungheinrich has taken all reasonably practicable steps to identify any faults in the plant. The **enclosed** Condition Report sets out the current condition of this plant, including any identified faults.

While all efforts have been made to identify faults, there may be other faults present that did not show up at time of inspection

Operational Safety Notice

The plant should not be used until all identified faults have been rectified and the equipment is deemed safe for operation.

It is the responsibility of the purchaser to ensure that the plant is inspected, serviced, and, if necessary, modified to meet current safety standards before use.

By participating in this sale and purchasing the second-hand plant, the purchaser acknowledges receipt of this notice and accepts full responsibility for ensuring the plant is safe for use.

Operating condition of the plant

Note: this condition report is a safety report only and does not represent overall appearance or operating condition of the plant

For any questions please contact Jungheinrich



Used Sale Safety & Compliance Check

MHE-000130 / 124181 / Harry Lim / 08/01/2026 / Jungheinrich / EFG218ki

Complete

Flagged items	0
Report ID	MHE-000130
Technician Name	Harry Lim
Conducted on	08/01/2026 1:31 PM AEDT
Branch	Sydney
Unit Details	
Equipment No.	124181
Brand	Jungheinrich
Model	EFG218ki

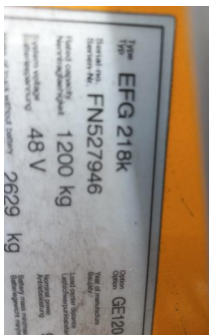


Photo 1

Include Images of the Front, Rear & Sides of the Unit

Over head guard damage
Tow pin damaged



Photo 2



Photo 3



Photo 4



Photo 5



Photo 6



Photo 7



Photo 8

Observations Summary

Truck Category	Category 3 - Electric Counterbalance
Emergency Stop, Horn/Warning device, lights, reverse alarm and flashing lights operational	Yes
Seat switch and seat belt switch fitted to check presence of operator & working in sequence?	Yes
Seat is secure and seat belt is in serviceable condition?	Yes
Mast switch operation for travel speed reduction to 3kmh above specified height	No
Are brakes and park brake functioning correctly?	Yes
Are tyre treads within limits and/or free from damage?	No

Rear almost on limit
Front tyres scuffed and starting to delaminate
2 x front wheels scuffed



Photo 9



Photo 10



Photo 11



Photo 12

Are fork tyres in good condition and within specification?

No

L/H extender tyne cylinder rod bent



Photo 13



Photo 14

Are mast chains in good condition, within specification and working correctly?

Yes

Are all controls inc. lift, tilt & sideshift/auxilliary functions working correctly

Yes

Confirm safety systems not bypassed or malfunctioning?

Yes

Additional Observations & Actions

List any other notable defects or faults e.g. ROPS/FOPS damage etc.

Overhead guard damaged.
Tow pin damaged.
L/ H Extender tyne cylinder rod bent.
Rear tyres required.
Front tyres required.
Front rims scuffed.
Sensor pole brackets bent.
Charger not tested, Fitted with euro plug.
Forklift fitted with aftermarket battery

Technician Sign off



Harry lim
08/01/2026 2:03 PM AEDT

Media summary



Photo 1



Photo 2



Photo 3



Photo 4



Photo 5



Photo 6



Photo 7



Photo 8



Photo 9



Photo 10



Photo 11



Photo 12



Photo 13



Photo 14