



## **DISCLAIMER: Second-Hand Plant Condition and Safety**

This document is Jungheinrich Australia Pty Ltd's (**Jungheinrich**) official notice that the second-hand plant offered for sale through this transaction (direct sale or auction) may contain faults or deficiencies that could pose risks to health and safety.

### **Important Information**

#### **Safety & Compliance of the Plant**

Given the plant is second-hand, please be aware it may include wear and tear, or be missing safety features that were not present or required at the time of original manufacture.

Jungheinrich has taken all reasonably practicable steps to identify any faults in the plant. The **enclosed Condition Report** sets out the current condition of this plant, including any identified faults.

While all efforts have been made to identify faults, there may be other faults present that did not show up at time of inspection

#### **Operational Safety Notice**

The plant should not be used until all identified faults have been rectified and the equipment is deemed safe for operation.

It is the responsibility of the purchaser to ensure that the plant is inspected, serviced, and, if necessary, modified to meet current safety standards before use.

By participating in this sale and purchasing the second-hand plant, the purchaser acknowledges receipt of this notice and accepts full responsibility for ensuring the plant is safe for use.

#### **Operating condition of the plant**

Note: this condition report is a safety report only and does not represent overall appearance or operating condition of the plant

For any questions please contact Jungheinrich



## Used Sale Safety & Compliance Check

MHE-000309 / 119972 / Melbourne Service / 28/04/2026 /  
Jungheinrich / EKX 513

Complete

<b>Flagged items</b>	0
<b>Report ID</b>	MHE-000309
<b>Technician Name</b>	Melbourne Service
<b>Conducted on</b>	28/04/2026 7:06 AM AEST
<b>Branch</b>	Melbourne
<b>Unit Details</b>	
<b>Equipment No.</b>	119972
<b>Brand</b>	Jungheinrich
<b>Model</b>	EKX 513

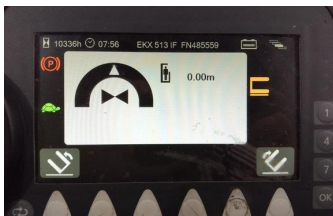


Photo 1

**Mast ID** 7780mm

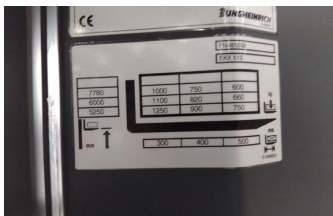


Photo 2

**Include Images of the Front, Rear & Sides of the Unit**



Photo 3



Photo 4



Photo 5



Photo 6



Photo 7

### Observations Summary

<b>Truck Category</b>	Category 7 - Narrow Aisle
<b>Emergency Stop Accessible &amp; Operational</b>	Yes
<b>Foot Switch allows operation only when depressed</b>	Yes
<b>Gates must be closed to allow operation</b>	Yes
<b>Two hand compulsion operation when in aisle</b>	Yes
<b>Horn/warning device operational</b>	Yes
<b>Flashing yellow light in direction of travel when in aisle</b>	Yes
<b>Confirm safety systems not bypassed or malfunctioning</b>	Yes

### Additional Observations & Actions

**List any other notable defects or faults e.g. ROPS/FOPS damage etc.**

Weep from lift cylinder



Photo 8



Photo 9



Photo 10

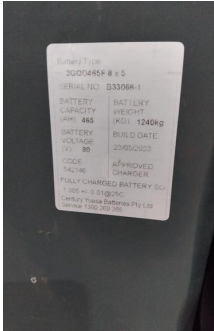


Photo 11



Photo 12



Photo 13

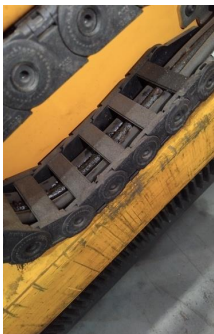


Photo 14

---

### Technician Sign off

David Nguyen  
28/04/2026 8:00 AM AEST

## Media summary

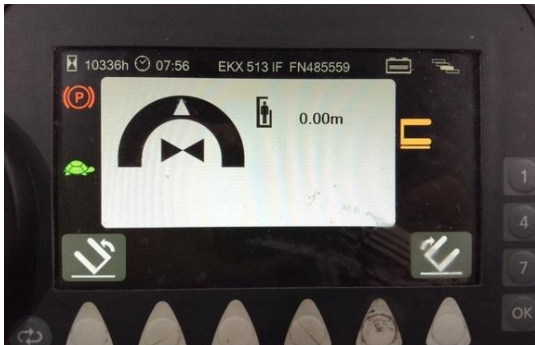


Photo 1

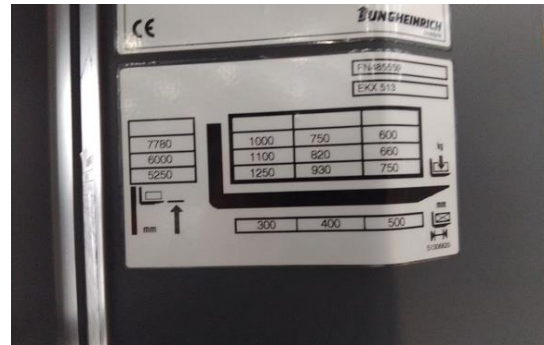


Photo 2



Photo 3



Photo 4



Photo 5



Photo 6



Photo 7



Photo 8



Photo 9



Photo 10

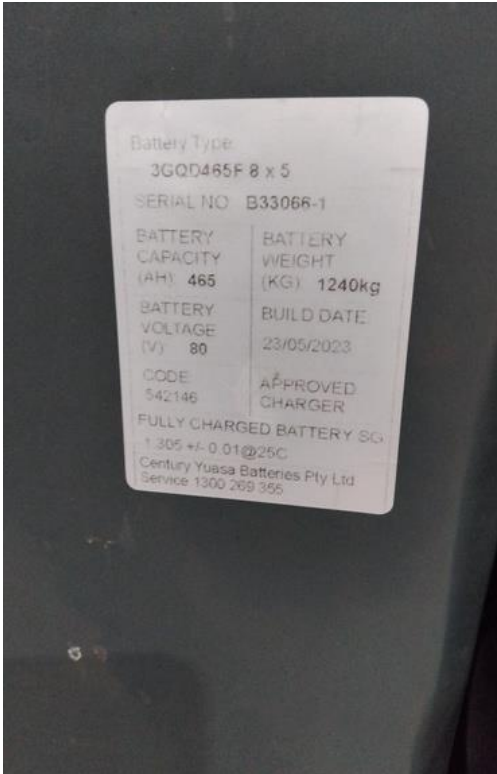


Photo 11



Photo 12



Photo 13



Photo 14