



## **DISCLAIMER: Second-Hand Plant Condition and Safety**

This document is Jungheinrich Australia Pty Ltd's (**Jungheinrich**) official notice that the second-hand plant offered for sale through this transaction (direct sale or auction) may contain faults or deficiencies that could pose risks to health and safety.

### **Important Information**

#### **Safety & Compliance of the Plant**

Given the plant is second-hand, please be aware it may include wear and tear, or be missing safety features that were not present or required at the time of original manufacture.

Jungheinrich has taken all reasonably practicable steps to identify any faults in the plant. The **enclosed** Condition Report sets out the current condition of this plant, including any identified faults.

While all efforts have been made to identify faults, there may be other faults present that did not show up at time of inspection

#### **Operational Safety Notice**

The plant should not be used until all identified faults have been rectified and the equipment is deemed safe for operation.

It is the responsibility of the purchaser to ensure that the plant is inspected, serviced, and, if necessary, modified to meet current safety standards before use.

By participating in this sale and purchasing the second-hand plant, the purchaser acknowledges receipt of this notice and accepts full responsibility for ensuring the plant is safe for use.

#### **Operating condition of the plant**

Note: this condition report is a safety report only and does not represent overall appearance or operating condition of the plant

For any questions please contact Jungheinrich



## Used Sale Safety & Compliance Check

MHE-000264 / 195166 / Timothy Hodson / 27/03/2026 / Other / C4-32

Complete

<b>Flagged items</b>	0
<b>Report ID</b>	MHE-000264
<b>Technician Name</b>	Timothy Hodson
<b>Conducted on</b>	27/03/2026 1:19 PM AEST
<b>Branch</b>	Brisbane
Unit Details	
<b>Equipment No.</b>	195166
<b>Brand</b>	Other
TAYLOR DUNN	
<b>Model</b>	C4-32
<b>Mast ID</b>	NA

### Include Images of the Front, Rear & Sides of the Unit



Photo 1



Photo 2



Photo 3



Photo 4

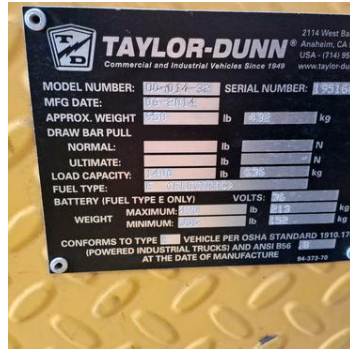


Photo 5

## Observations Summary

### Truck Category

Category 2 - Ride on Junior Trucks

### Emergency Stop accessible and operational

No

Machine does not turn on

### Foot switch allows drive function only when depressed

N/A

### Operator gates (optional on low level order pickers) restrict travel when open

N/A

### Horn/Warning device operational

No

Could not check

### Confirm safety systems not bypassed or malfunctioning?

No

Does not operate, could not check

## Additional Observations & Actions

### List any other notable defects or faults e.g. ROPS/FOPS damage etc.

Machine is dead, could not check any electrical systems

### Technician Sign off

Timothy Hodson  
27/03/2026 1:42 PM AEST

## Media summary



Photo 1

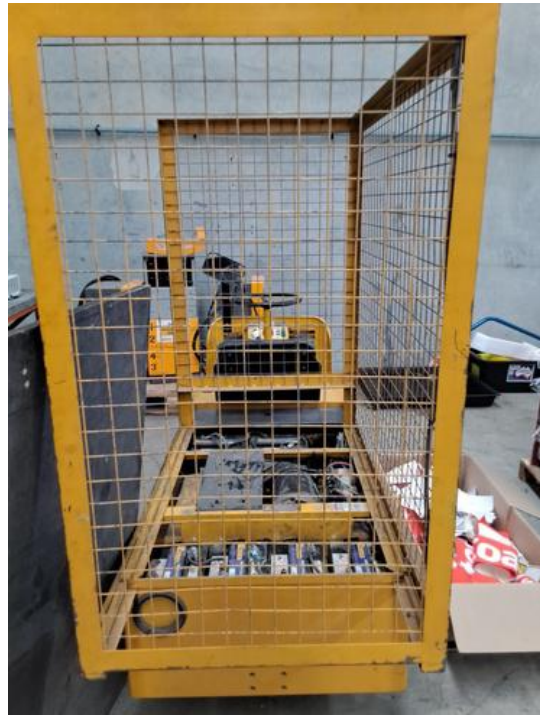


Photo 2



Photo 3



Photo 4



Photo 5