



DISCLAIMER: Second-Hand Plant Condition and Safety

This document is Jungheinrich Australia Pty Ltd's (**Jungheinrich**) official notice that the second-hand plant offered for sale through this transaction (direct sale or auction) may contain faults or deficiencies that could pose risks to health and safety.

Important Information

Safety & Compliance of the Plant

Given the plant is second-hand, please be aware it may include wear and tear, or be missing safety features that were not present or required at the time of original manufacture.

Jungheinrich has taken all reasonably practicable steps to identify any faults in the plant. The **enclosed** Condition Report sets out the current condition of this plant, including any identified faults.

While all efforts have been made to identify faults, there may be other faults present that did not show up at time of inspection

Operational Safety Notice

The plant should not be used until all identified faults have been rectified and the equipment is deemed safe for operation.

It is the responsibility of the purchaser to ensure that the plant is inspected, serviced, and, if necessary, modified to meet current safety standards before use.

By participating in this sale and purchasing the second-hand plant, the purchaser acknowledges receipt of this notice and accepts full responsibility for ensuring the plant is safe for use.

Operating condition of the plant

Note: this condition report is a safety report only and does not represent overall appearance or operating condition of the plant

For any questions please contact Jungheinrich



Used Sale Safety & Compliance Check

MHE-000182 / 114366 - OB902596 / Oluwatobi Olagbegi /
27/01/2026 / TCM / FHGE18T3

Complete

Flagged items

0

Report ID

MHE-000182

Technician Name

Oluwatobi Olagbegi

Conducted on

27/01/2026 11:42 AM ACDT

Branch

Adelaide

Unit Details

Equipment No.

114366 - OB902596



Photo 1



Photo 2



Photo 3



Photo 4



Photo 5



Photo 6



Photo 7

Brand	TCM
Model	FHGE18T3
Mast ID	VM400 - 0A9 / 221646



Photo 8

Include Images of the Front, Rear & Sides of the Unit



Photo 9



Photo 10



Photo 11






Photo 12



Photo 13



Photo 14

Observations Summary	
Truck Category	Category 4 - IC Counterbalance
Seat switch and seat belt switch fitted to check presence of operator & working in sequence?	Yes
Emergency Stop (if fitted), Horn/Warning device, lights, reverse alarm and flashing lights operational	N/A
Are brakes and park brake functioning correctly?	No
Are tyre treads within limits and/or free from damage?	Yes
<div>  <p>Photo 15</p> </div> <div>  <p>Photo 16</p> </div>	
Are fork tynes in good condition and within specification?	Yes
Are mast chains in good condition, within specification and working correctly?	Yes
 <p>Photo 17</p>	
Are all controls inc. lift, tilt & sideshift/auxilliary functions working correctly	Yes
Confirm safety systems not bypassed or malfunctioning?	Yes
Additional Observations & Actions	
List any other notable defects or faults e.g. ROPS/FOPS damage etc.	

Technician Sign off



oluwatobi
27/01/2026 3:23 PM ACDT

Media summary



Photo 1



Photo 2

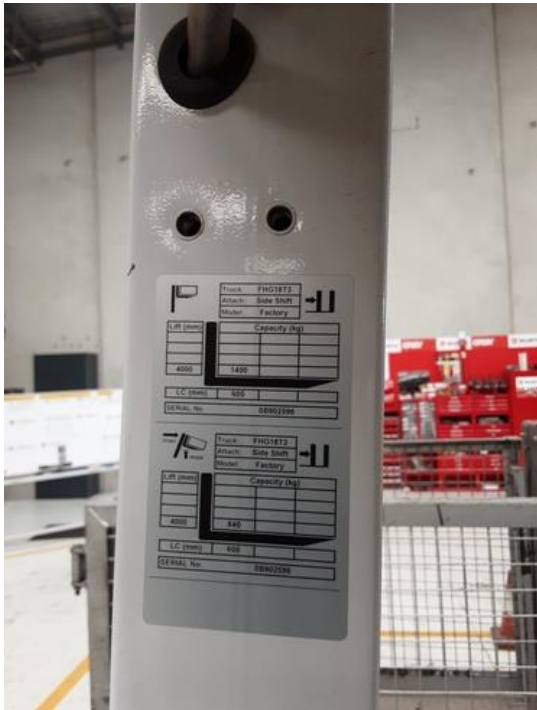


Photo 3



Photo 4



Photo 5



Photo 6



Photo 7



Photo 8



Photo 9



Photo 10



Photo 11



Photo 12



Photo 13



Photo 14



Photo 15



Photo 16



Photo 17